

1、焊接时请注意元件的正负极和方向。

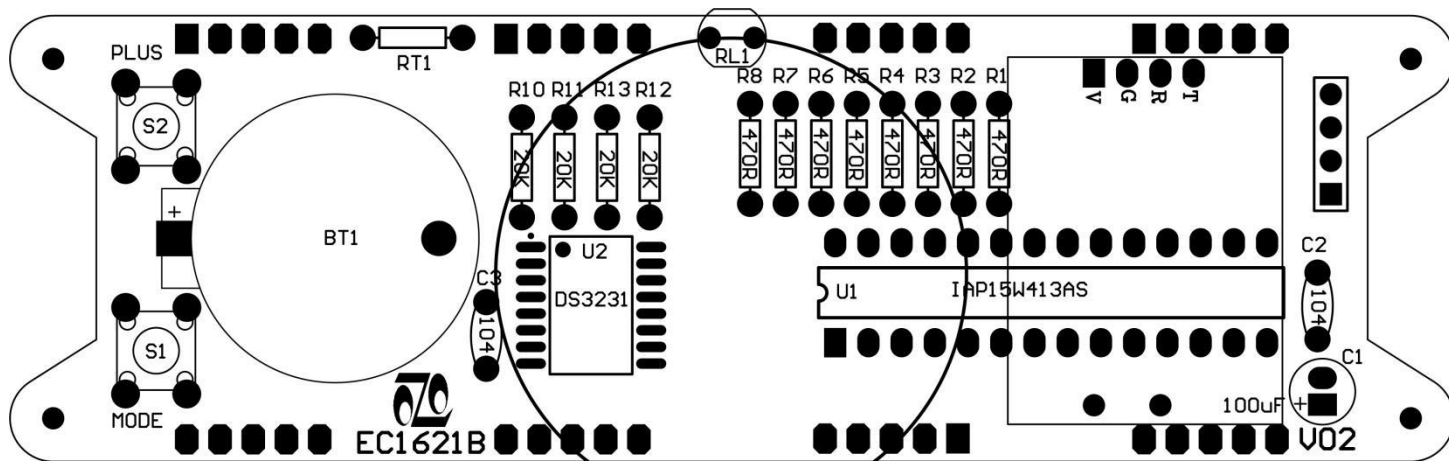
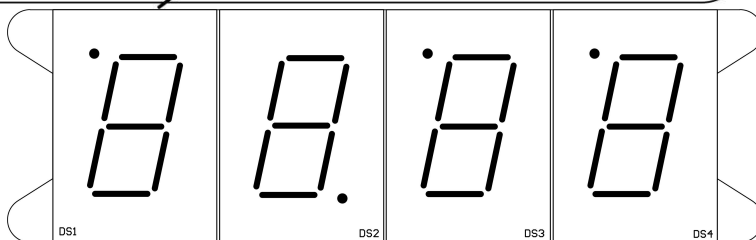
Attention is paid to the positive and negative poles of the components and the direction of welding.

2、必须确保焊好背面的元件后再焊接数码管。并注意数码管的方向。

Must ensure that the components are welded on the back side of the rear and then welded to the digital tube. And pay attention to the direction of digital tube.

3、其他资料如《按键操作说明》、电路图等资料下载请登录网址：<http://pan.baidu.com/s/1i57oZUP> 或扫描右侧的二维码下载。

Other information such as "key operation description", circuit diagram and other data download please login URI <http://pan.baidu.com/s/1i57oZUP> or scan the right side of the two-dimensional code download.



1、焊接时请注意元件的正负极和方向。

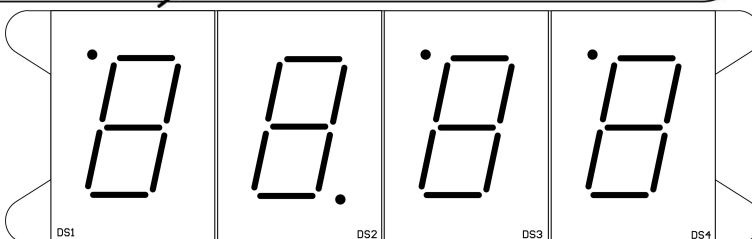
Attention is paid to the positive and negative poles of the components and the direction of welding.

2、必须确保焊好背面的元件后再焊接数码管。并注意数码管的方向。

Must ensure that the components are welded on the back side of the rear and then welded to the digital tube. And pay attention to the direction of digital tube.

3、其他资料如《按键操作说明》、电路图等资料下载请登录网址：<http://pan.baidu.com/s/1i57oZUP> 或扫描右侧的二维码下载。

Other information such as "key operation description", circuit diagram and other data download please login URI <http://pan.baidu.com/s/1i57oZUP> or scan the right side of the two-dimensional code download.



EC1621 按键功能简述: EC1621 key function describe:

上电默认为时间显示模式,此时按下 MODE 键,进入“年设置”模式,再按 MODE 键可依次进入“月设置”模式、“日设置”模式、“时设置”模式、“分设置”模式、“秒设置”模式。在这些模式下,可以按下 PLUS 键进行设置,长按 PLUS 可快速设置。

Default time display mode after power on,then it will enter “year setting” mode after you press MODE key,after that if you Continue to press MODE key it will enter “month setting”,“date setting”,“hour setting”,“minute setting”,“second setting” in turn.In these modes,you can use PLUS key to set,long press will set quickly.

在时间显示模式下长按 MODE 键 3 秒进入“整点报时开关设置”模式,再按 MODE 键可依次进入“整点报时起始时间设置”模式、“整点报时结束时间设置”模式、“中英文报时设置”模式、“闹钟 1 开关设置”模式、“闹钟 1 时设置”模式,“闹钟 1 分设置”模式、“响闹 1 时长设置”模式、“响闹 1 铃声设置”模式、“闹钟 2 开关设置”模式、“闹钟 2 时设置”模式,“闹钟 2 分设置”模式、“响闹 2 时长设置”模式、“响闹 2 铃声设置”模式、“闹钟 3 开关设置”模式、“闹钟 3 时设置”模式,“闹钟 3 分设置”模式、“响闹 3 时长设置”模式、“响闹 3 铃声设置”模式、“闹钟 4 开关设置”模式、“闹钟 4 时设置”模式,“闹钟 4 分设置”模式、“响闹 4 时长设置”模式、“响闹 4 铃声设置”模式。

In the time display mode long press the MODE key for 3 seconds into the “Hourly Chime Enable set” mode, press the MODE button can turn into “hourly chime star time set” mode, “hourly chime stop time set” mode, “Time Chinese or English Set” mode, “alarm 1 enable set ” mode, “alarm 1 hour set” mode, “alarm 1 minute set” mode, “the length of alarm 1 time set” mode, “alarm 1 bell set” mode, “alarm 2 enable set ” mode, “alarm 2 hour set” mode, “alarm 2 minute set” mode, “the length of alarm 2 time set” mode, “alarm 2 bell set” mode, “alarm 3 enable set ” mode, “alarm 3 hour set” mode, “alarm 3 minute set” mode, “the length of alarm 3 time set” mode, “alarm 3 bell set” mode, “alarm 4 enable set ” mode, “alarm 4 hour set” mode, “alarm 4 minute set” mode, “the length of alarm 4 time set” mode, “alarm 4 bell set” mode.

在时间显示模式下,长按 MODE 键 5 秒进入“光控开关设置”模式,再按 MODE 键可依次进入“暗光亮度设置”模式、“温度显示(华氏度或摄氏度显示)设置”模式、“温度校准设置”模式、“12 小时制显示开关设置”模式、“轮显设置”模式、“音量设置”模式。在各个模式下都可按下 PLUS 键进行设置。

Under time display mode,long press MODE key for 5seconds can enter“Optical switch settings”,then press MODE key again to enter “brightness setting”,“Temperature display (Fahrenheit or Celsius display) setting”,“Temperature calibration setting”,“12-hour display on/off”, “rotatio display on/off”, “volume setting”.All the above modes can be set by Plus key operation.

在时间显示下,先按住 MODE 键再按 PLUS 键,进入秒表模式,在秒表模式下按 PLUS 键可开始计时和暂停计时。在秒表模式下按 MODE 键可依次进入倒计时小时设置模式、倒计时分钟设置模式、倒计时秒钟设置模式、倒计时结束铃声设置模式、倒计时模式。

In the time display, hold down the MODE key and then press the PLUS button, enter the stopwatch mode, the stopwatch mode press PLUS start time and pause time.In the stopwatch mode press MODE can turn into the countdown hours setting mode, countdown minutes setting mode, the countdown seconds setting mode, countdown over ring set mode, the countdown mode.

以上更详细的描述请参考《按键操作说明》(在资料中有下载)。

About the More detailed description please to refer <key operation declaration> (you can download in data)。

EC1621 按键功能简述: EC1621 key function describe:

上电默认为时间显示模式,此时按下 MODE 键,进入“年设置”模式,再按 MODE 键可依次进入“月设置”模式、“日设置”模式、“时设置”模式、“分设置”模式、“秒设置”模式。在这些模式下,可以按下 PLUS 键进行设置,长按 PLUS 可快速设置。

Default time display mode after power on,then it will enter “year setting” mode after you press MODE key,after that if you Continue to press MODE key it will enter “month setting”,“date setting”,“hour setting”,“minute setting”,“second setting” in turn.In these modes,you can use PLUS key to set,long press will set quickly.

在时间显示模式下长按 MODE 键 3 秒进入“整点报时开关设置”模式,再按 MODE 键可依次进入“整点报时起始时间设置”模式、“整点报时结束时间设置”模式、“中英文报时设置”模式、“闹钟 1 开关设置”模式、“闹钟 1 时设置”模式,“闹钟 1 分设置”模式、“响闹 1 时长设置”模式、“响闹 1 铃声设置”模式、“闹钟 2 开关设置”模式、“闹钟 2 时设置”模式,“闹钟 2 分设置”模式、“响闹 2 时长设置”模式、“响闹 2 铃声设置”模式、“闹钟 3 开关设置”模式、“闹钟 3 时设置”模式,“闹钟 3 分设置”模式、“响闹 3 时长设置”模式、“响闹 3 铃声设置”模式、“闹钟 4 开关设置”模式、“闹钟 4 时设置”模式,“闹钟 4 分设置”模式、“响闹 4 时长设置”模式、“响闹 4 铃声设置”模式。

In the time display mode long press the MODE key for 3 seconds into the “Hourly Chime Enable set” mode, press the MODE button can turn into “hourly chime star time set” mode, “hourly chime stop time set” mode, “Time Chinese or English Set” mode, “alarm 1 enable set ” mode, “alarm 1 hour set” mode, “alarm 1 minute set” mode, “the length of alarm 1 time set” mode, “alarm 1 bell set” mode, “alarm 2 enable set ” mode, “alarm 2 hour set” mode, “alarm 2 minute set” mode, “the length of alarm 2 time set” mode, “alarm 2 bell set” mode, “alarm 3 enable set ” mode, “alarm 3 hour set” mode, “alarm 3 minute set” mode, “the length of alarm 3 time set” mode, “alarm 3 bell set” mode, “alarm 4 enable set ” mode, “alarm 4 hour set” mode, “alarm 4 minute set” mode, “the length of alarm 4 time set” mode, “alarm 4 bell set” mode.

在时间显示模式下,长按 MODE 键 5 秒进入“光控开关设置”模式,再按 MODE 键可依次进入“暗光亮度设置”模式、“温度显示(华氏度或摄氏度显示)设置”模式、“温度校准设置”模式、“12 小时制显示开关设置”模式、“轮显设置”模式、“音量设置”模式。在各个模式下都可按下 PLUS 键进行设置。

Under time display mode,long press MODE key for 5seconds can enter“Optical switch settings”,then press MODE key again to enter “brightness setting”,“Temperature display (Fahrenheit or Celsius display) setting”,“Temperature calibration setting”,“12-hour display on/off”, “rotatio display on/off”, “volume setting”.All the above modes can be set by Plus key operation.

在时间显示下,先按住 MODE 键再按 PLUS 键,进入秒表模式,在秒表模式下按 PLUS 键可开始计时和暂停计时。在秒表模式下按 MODE 键可依次进入倒计时小时设置模式、倒计时分钟设置模式、倒计时秒钟设置模式、倒计时结束铃声设置模式、倒计时模式。

In the time display, hold down the MODE key and then press the PLUS button, enter the stopwatch mode, the stopwatch mode press PLUS start time and pause time.In the stopwatch mode press MODE can turn into the countdown hours setting mode, countdown minutes setting mode, the countdown seconds setting mode, countdown over ring set mode, the countdown mode.

以上更详细的描述请参考《按键操作说明》(在资料中有下载)。

About the More detailed description please to refer <key operation declaration> (you can download in data)。