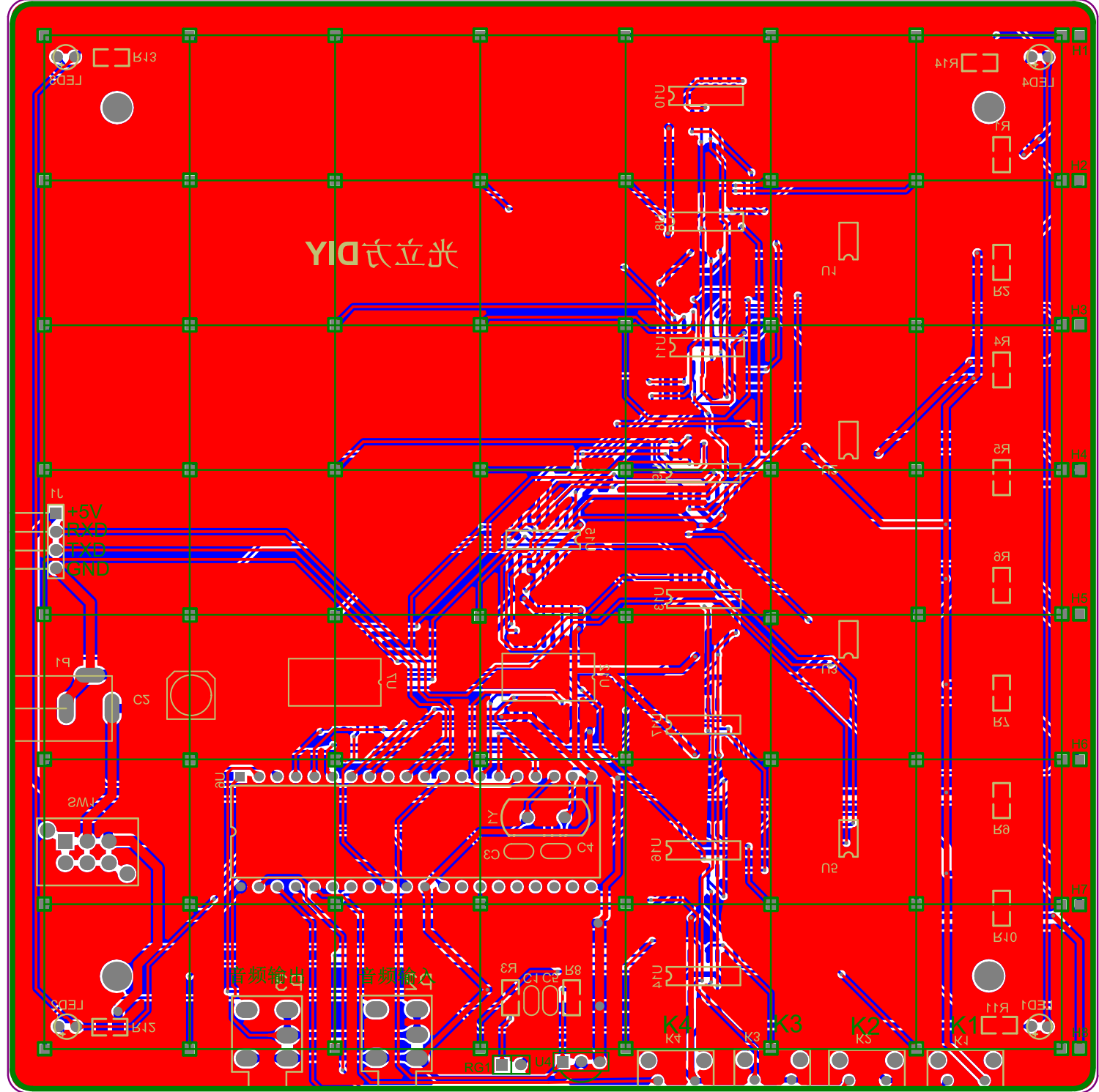


| Size | Number | Revision |
|----------|----------|----------|
| A2 | | |
| 2016/4/8 | | |
| 王贵利 | 王立方原理图 | SchDoc |
| File | Sheet of | Drawn By |



| Comment | Description | Designator | Footprint | LibRef | Quantity |
|---------------------|---|--|---------------------|---------------------|----------|
| 10uf 0805 | Capacitor | C1, C5 | c_0805 | CAP | 2 |
| 220uf | Capacitor | C2, C6, C13, C18 | CAPSMT5.5*6 | CAPACITOR POL | 4 |
| 30pf 0805 | Capacitor | C3, C4 | C_0805 | CAP | 2 |
| 0.1uF | Capacitor | C7, C10, C15 | C_0805 | CAP | 3 |
| 1uf | Capacitor | C8, C11, C12, C14, C16, C17 | C_0805 | CAP | 6 |
| NC/ 100P | Capacitor | C9 | C_0805 | CAP | 1 |
| CON1 | Connector | DS11, DS12, DS13, DS14, DS15, DS16, DS17, DS18, DS21, DS22, DS23, DS24, DS25, DS26, DS27, DS28, DS31, DS32, DS33, DS34, DS35, DS36, DS37, DS38, DS41, DS42, DS43, DS44, DS45, DS46, DS47, DS48, DS51, DS52, DS53, DS54, DS55, DS56, DS57, DS58, DS61, DS62, DS63, DS64, DS65, DS66, DS67, DS68, DS71, DS72, DS73, DS74, DS75, DS76, DS77, DS78, DS81, DS82, DS83, DS84, DS85, DS86, DS87, DS88, H1, H2, H3, H4, H5, H6, H7, H8 | con1 | CON1 | 72 |
| CON4 | Connector | J1 | SIP-4 | CON4 | 1 |
| 轻触开关 | Switch | K1, K2, K3, K4 | 轻触开关 侧脚 | SW-PB | 4 |
| 5mmLED | | LED1, LED2, LED3, LED4, LED5 | LED5 | LED_1 | 5 |
| PHONEJACK STEREO | | P1 | DC_005A_1 | PHONEJACK STEREO | 1 |
| PHONEJACK STEREO SW | | P2, P3 | PHONEJACK STEREO SW | PHONEJACK STEREO SW | 2 |
| 510R 0805 | | R1, R2, R4, R5, R6, R7, R9, R10, R11, R12, R13, R14 | 0805 | RES2 | 12 |
| 10K 0805 | | R3, R8 | 0805 | RES2 | 2 |
| 10K | | R18, R23, R27 | 0805 | RES | 3 |
| 51K | | R19, R26 | 0805 | RES | 2 |
| 510R | | R20 | 0805 | RES | 1 |
| 4R7 | | R21 | 0805 | RES | 1 |
| 0R | | R22 | 0805 | RES | 1 |
| 22K | | R24 | 0805 | RES | 1 |
| 33k | | R25 | 0805 | RES | 1 |
| 1K | | R28, R29, R30 | 0805 | RES | 3 |
| 光敏电阻 | | RG1 | SIP2/2.54 | RG | 1 |
| | | S1, S2, S3 | 轻触开关 侧脚 | SW-PB | 3 |
| Speaker | Loudspeaker | SP1 | PIN2 | Speaker | 1 |
| 自锁开关 | Single-Pole, Single-Throw Switch | SW1 | zisuo_w | SW-SPST | 1 |
| SW-SPDT | SPDT Subminiature Toggle Switch, Right Angle Mounting, Vertical Actuation | SW2 | bwkaiguan | SW-SPDT | 1 |
| TF | | TF1 | TF | TF | 1 |
| APM4953 SO8 | | U1, U2, U3, U5 | SO-8 | 4953 | 4 |
| 1838 | Header, 3-Pin | U4 | HDR1X3 | Header 3 | 1 |
| STC12C5A60S2 DIP40 | | U6 | DIP40 | STC89C52 | 1 |
| 74HC245 | | U7, U12 | SO20 | 74HC245 | 2 |
| 74HC595N | | U8, U9, U10, U11, U13, U14, U16, U17 | SO-16 | 74HC5965N | 8 |
| 74HC138 | | U15 | SO-16 | 74ALS138 | 1 |
| 8002B | | U18 | SO-8 | 8002B | 1 |
| | | U19 | SO-16 | AC1096 | 1 |
| Optoisolator1 | 4-Pin Phototransistor Optocoupler | U20, U21, U22 | 贴片光耦 | Optoisolator1 | 3 |
| 1364275-1 | USB 1.1, Right Angle, SMT, B Type, Receptacle, 4 Position, Black | USB1 | USB1 | 1364275-1 | 1 |
| 22.1184MHZ | Crystal | Y1 | XTAL | CRYSTAL | 1 |
| | | | | | |