

Welcome Guide

BW-LT1 Smart Lamp

BlitzWolf



Eye Sight Protection



Eco-friendly LED



4 Scene Modes



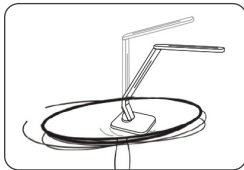
2.1A USB

Main Feature

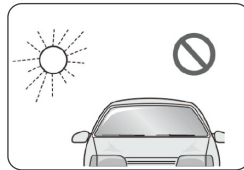
- Flicker Free, Bright Natural Lighting
- 5 Step Dimming Control + 4 scene Options
- 2.1A USB Smart Charging Port
- 15W High Efficiency LED
- Dual 180° Rotatable

Please read this instruction manual before operating or assembling this unit.

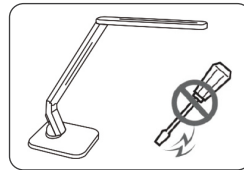
CAUTION



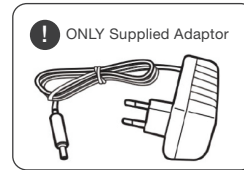
Place on flat, secure source.



Do not place near any heat source or direct sunlight.

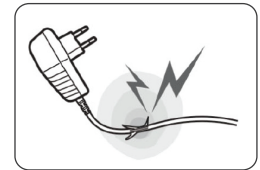


Do not repair, disassemble, or modify under any circumstances.



! ONLY Supplied Adaptor

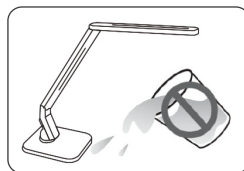
Use ONLY the supplied AC power adapter.



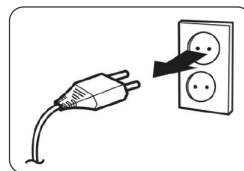
Do not use appliances with frayed or damaged electrical cord.



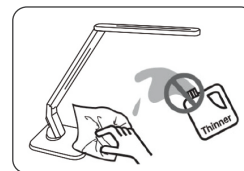
Do not touch electrical appliances with wet hands or when liquids are present.



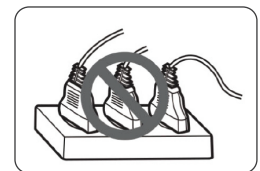
Please keep the light and all appliances dry and clean.



Unplug adapter when the light will not be used for an extended period of time.



Clean only with a soft dry cloth and do not use solvents or cleaning solutions.



Never overload electrical circuits as it may cause electrical shock or fire.

BW-LT1 Smart Lamp



Brightness Control

5 Steps Brightness Dimming Control.

4 Scene Modes

Read Mode(5300K)
It stimulates concentration and reduces eyes strain with the choice of mid-range color temperature.

Study Modes (6200K)
Increases attention and concentration with the choice of high-range color temperature.

Relax Mode(4200K)
Promotes relaxation along with improved mood and the choice of low-range color temperature.

Sleep Mode (3300K)
Encourage a deep sleep with the comfort of soft light.

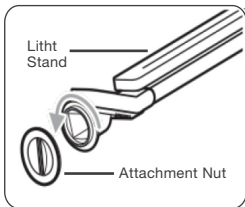
Timing Control
Automatically turns off the light in one hour while in any mode of operation.

One Touch Control
Convenient to switch on/off on various situation by simple touch.

USB Power Charging Port

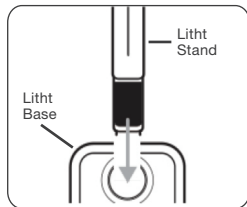
2.1A USB port provide fast charging to your smart devices such as phones and iPad, convenient for your life.

Assembly Instructions



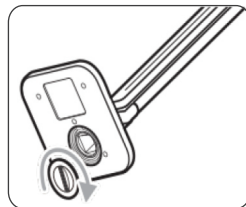
Step 1

Unscrew and remove the Attachment Nut from the Light Stand.



Step 2

Insert the Light Stand into round hole on the Light Base as shown.



Step 3

Re-insert the Attachment Nut into the bottom and tighten.

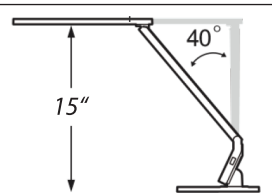


Step 4

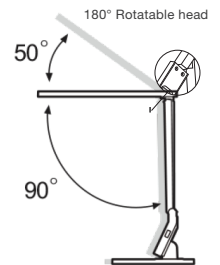
Adjust the lamp to the desired position.

Adjustments

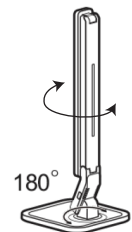
Parallel Arm



Light Head



Lamp Base



Operation Instruction



Power Supply

US/EU/UK/AU plug optional
110-240V power all compatible.



Control Panel

Touch and select your desired light mode and brightness.



2.1A USB Charger

Connect the USB cable and charge your smart devices easily.