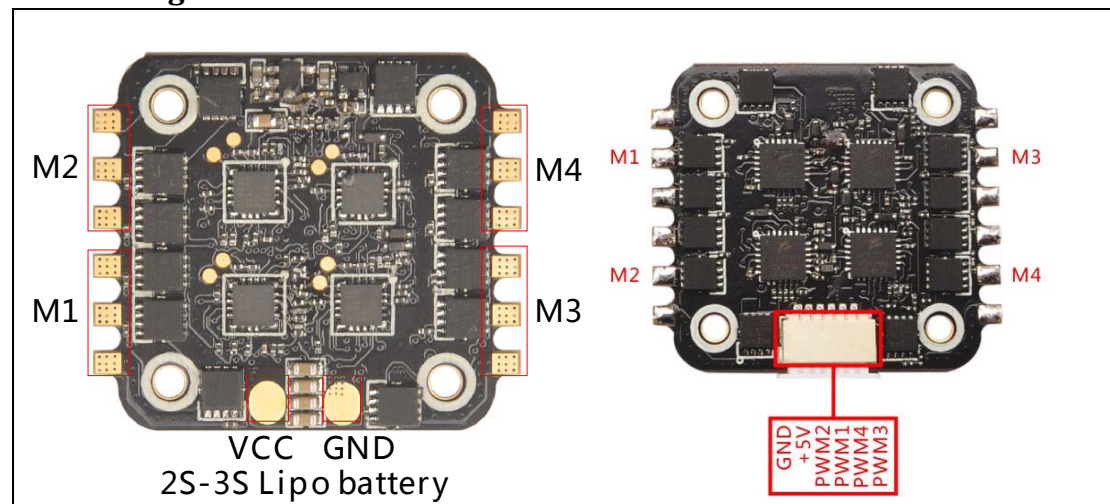


MINICUBE 4IN1 ESC QUICK USER GUIDE V1.0

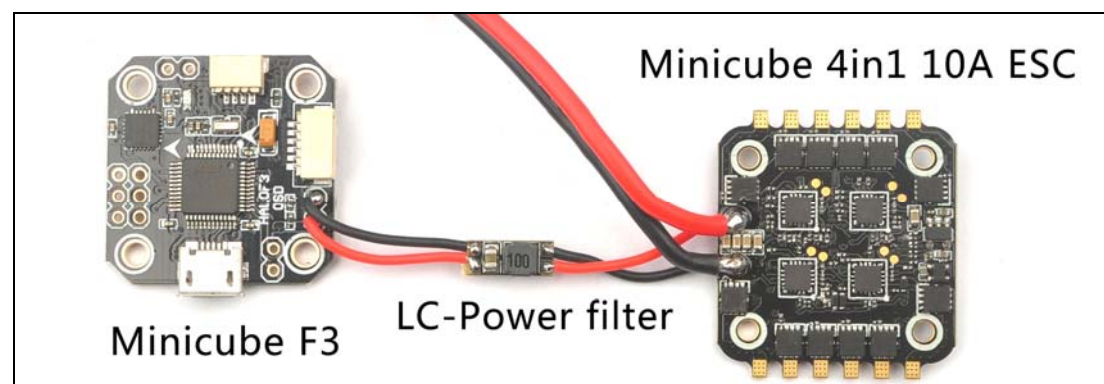
Specification:

- Size:27mm*27mm*5mm
- Mount hole: 20mm*20mm
- Firmware version: BLHELI_S 16.5
- Firmware target: F-H-40
- BB2, 48MHZ Chip
- Lipo Battery: 2S-3S
- Con. Current: 10A
- Peak Current: 15A (10S)
- BEC: 5V @0.1A
- Programming: YES
- Betaflight pass-through ready
- Dshot600 ready(Default)

Pinout Diagram:



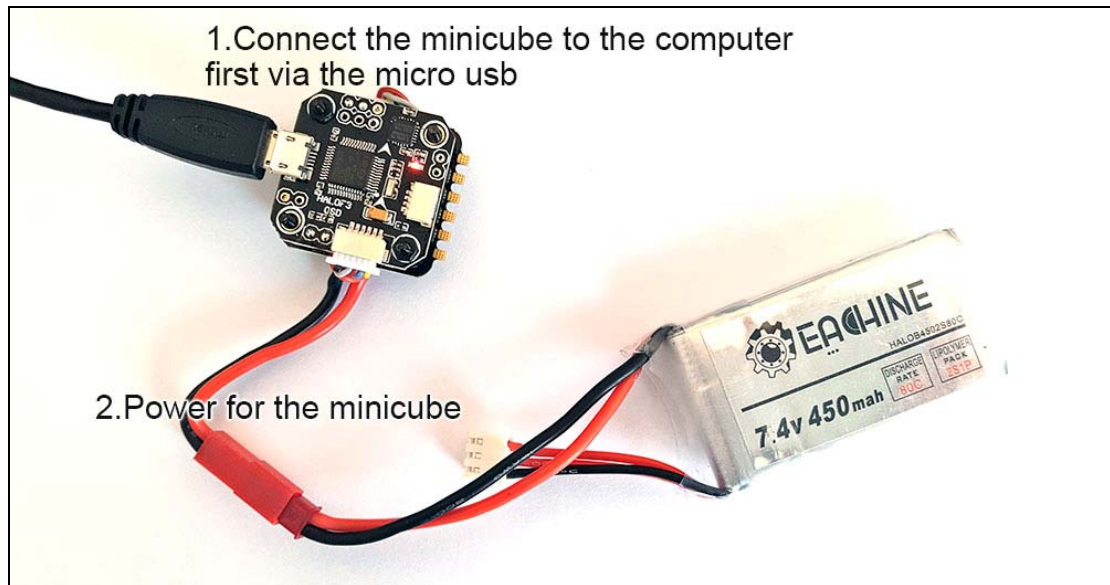
Connection with Minicube F3 flight controller:



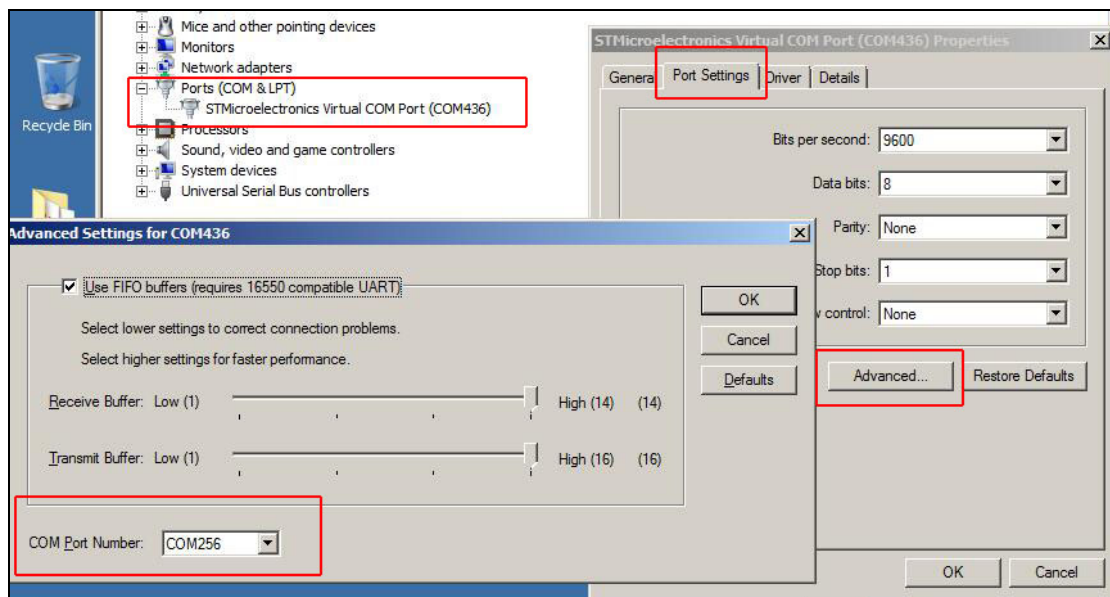
Software and Betaflight pass-through:

1. Download New release BlheliSuite from:
<https://www.mediafire.com/folder/dx6kfaasyo241/BLHeliSuite>

2. Connect the Minicube 4in1 ESC to Minicube F3 flight controller or other F3 flight controller like Piko or SP RACING F3 etc.
3. Connect the flight controller to computer and power for the Minicube 4in1 ESC



4. Open the Device Manager of your computer ,find the Ports, please make sure the Com port Serial Number is under 255, otherwise it will can't connect to the BLHELISUITE. You can change the port serial number like the step :



5. Open the BLHELISUITE, Select SILABS BLHeli Bootloader (Cleanflight) from the third tab on the top side. Then Select the right Serial com port and Click connect. You can also Flash the new release BLHeli_s firmware via the BLHEILISUITE, Target F-H-40.

BLHeliSuite 16.6.14.9.0.0 [m4wFCIntf SiLabs-BLB @COM5]

ESC setup ESC tools Select ATMEL / SiLABS Interface Options ? BLHeli info Save Screenshot

SiLabs ESC Setup ESC overview Motors Make interfaces

ESC# 1 - Name: EMPTY

F-H-40 for Multicopter Motors BLHel_S Revision: 16.5

Misc: Programming by TX

Startup Power: 0.50

Motor Direction: 1 Normal

PPM Min Throttle: 37 1148

Beep Strength: 40

Temperature Protection: 7 140

Demag Compensation: 2 Low

PPM Max Throttle: 200 1832

Beacon Strength: 80

Low RPM Power Protect: 1 On

Motor Timing: 3 Medium

PPM Center Throttle: 122 1488

Beacon Delay: 4 10 minutes

Brake On Stop: 0 Off

Read Setup Write Setup Flash BLHeli Flash Other

Port: COM 5 Baud: 115200 Disconnect

Multiple ESC / Master#1 1 2 3 4

Found Multiple ESC: ESC#1;ESC#2;ESC#3;ESC#4;

Click to Check the details of the Minicube 4 in 1 ESC

Check