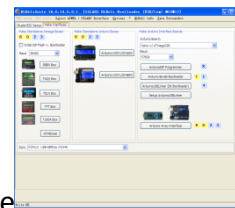



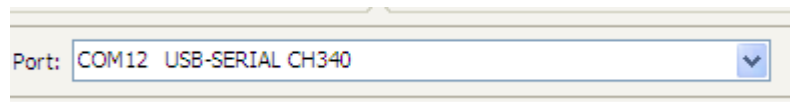
Connecting to Biheli-PC with TP-LINK (ZTW) Setting functions and upgrading software Steps (For Windows only)

1、 Install the TP-LINK driver

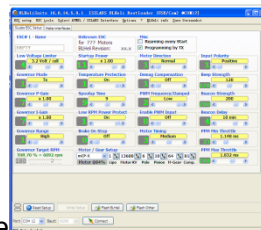
2、 Install the Biheli-PC interface ([Get](#) the latest version of the PC)



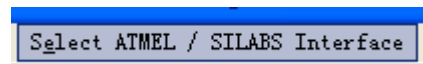
3、 After installing the PC interface, First open the interface  , you



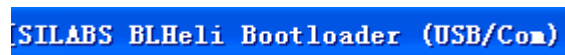
should see the port, (Ploaris"SERIES ESC),



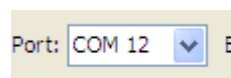
4、 Return to the main function interface  , and then open the



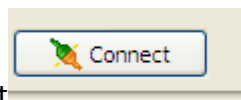
, select this functions



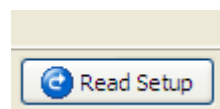
, next select the same port



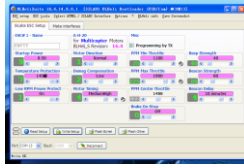
. Click on the mouse to connect



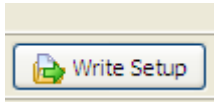
, then click read



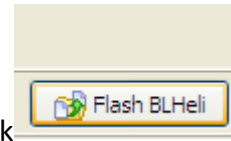
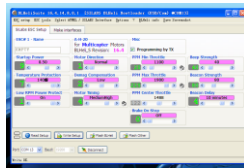
. When the connection is correct, the PC displays as follows



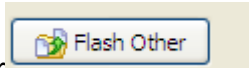
in this interface where you can Set the function and select the need to change the function parameters , after choose the functions click



, setting successfully.



5、Upgrade Software in this interface click , after click OK,and you will see the firmware flashed successfully! Or another way,



click the flash other , select A_H_20_REV16_4.HEX, you will also see the firmware flashed successfully!

