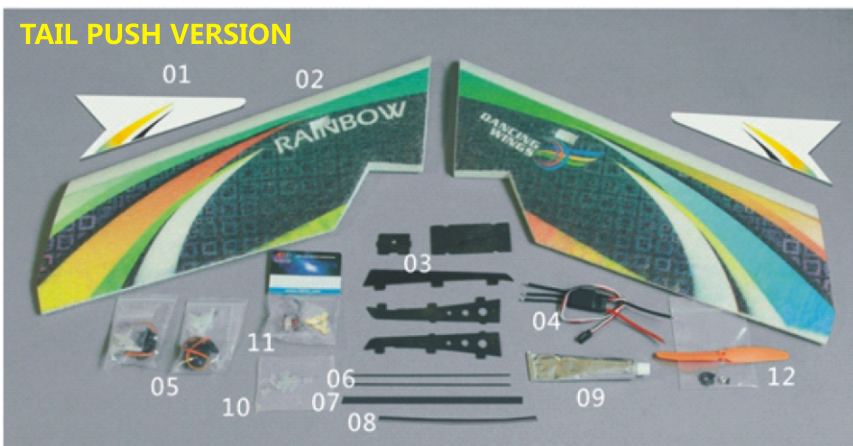


Specification
 Wingspan: 1000mm
 Flying Weight: 320g

Suggested Equipment
TAIL PUSH VERSION
 Motor: 1908 2050KV
 ESC: 20
 Propeller: 7 inch
 Servos: 9g *2
 Battery: 2s 1500-2200mAh
 Radio ≥ 3CH

ACCESSORIES INCLUDED



BASIC EQUIPMENTS

- 01 Wing tip*2
- 02 Fuselage Main Part*2
- 03 Wooden supports
- 06 Carbon Rods 1.5*110mm*2pcs
- 07 Carbon sheets 0.5*200mm*1pc
- 08 Heat-Shrinkable Tube
- 09 Foam Glue*1
- 10 Servo Horn (D01+D02) *2+Z-type Steel Wire*4

TAIL PUSH VERSION OPTIONAL EQUIPMENTS

- 04 ESC 20A*1
- 05 Servo 9g*2
- 11 Motor 1908 2050KV
- 12 prop + prop saver

Additional Safety Precautions and Warnings

Age Recommendation: This is not a toy, not for children under 14 years old.

•Always keep a safe distance in all directions around your model to avoid collisions or injury. The model is controlled by a radio subject to interference from many sources outside your control. Interference can cause momentary loss of control.

•Always operate your model in open spaces away from full-size vehicles, traffic and people.

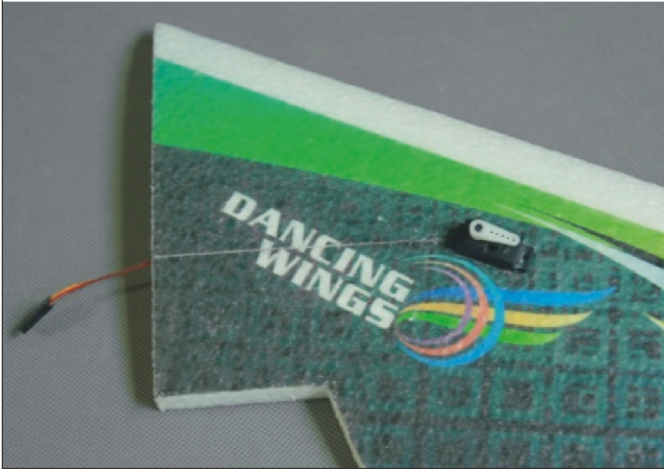
•Always carefully follow the directions and warnings for this and any optional support equipment (chargers , rechargeable battery packs, etc.).

•Always keep all chemicals , small parts and anything electrical out of the reach of children.

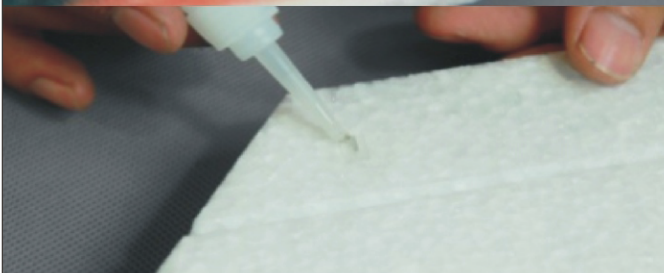
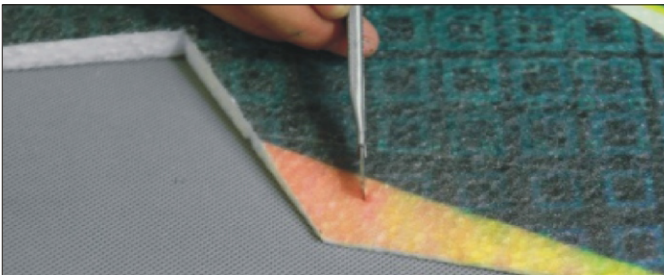
•Always avoid water exposure to all equipment not specifically designed and protected for this purpose . Moisture causes damage to electronics.

•Never place any portion of the model in your mouth as it could cause serious injury or even death.
 Never operate your model with low transmitter batteries.

HOW TO ASSEMBLE



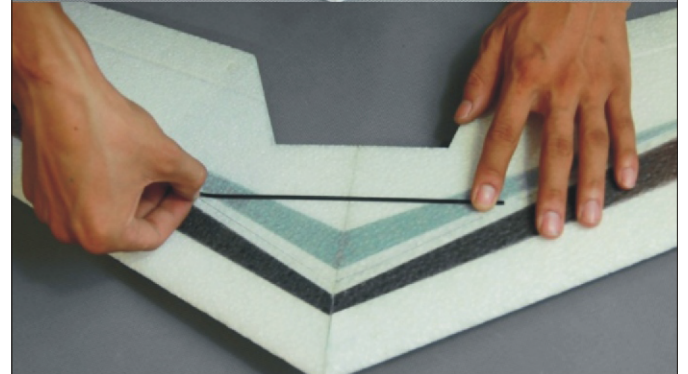
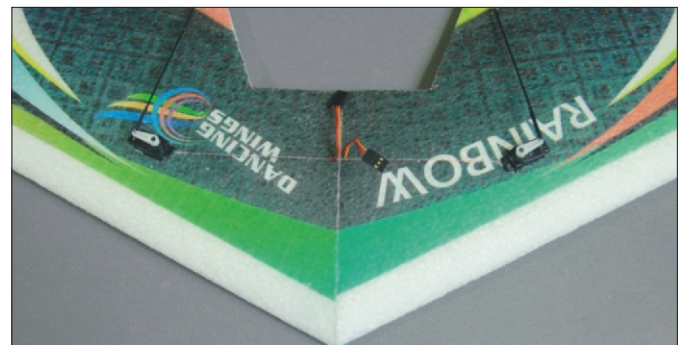
0.01 Glue and fix the servo on the wings, then insert the servo wires inside the slot.



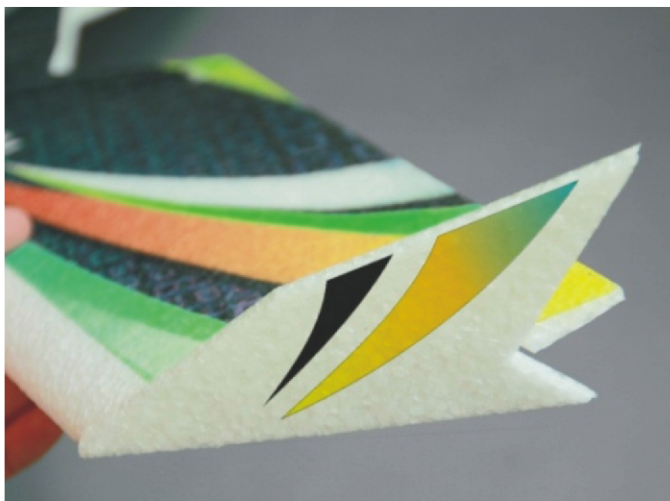
0.02 Cut a slot on aileron by knife and assemble the servo horn.



0.03 Make a connecting rod by using the Z-type steel wire and carbon rod, and then connect the servo and aileron.



0.04 Glue together the two wings, and insert a carbon sheet on the back as reinforce.

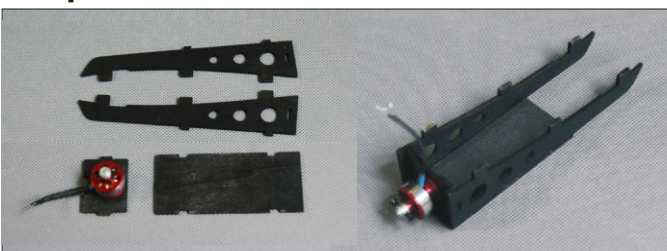


0.05 Glue the wing tips, and fix the wooden supports at the bottom of the fly wing, so main part is finish here.

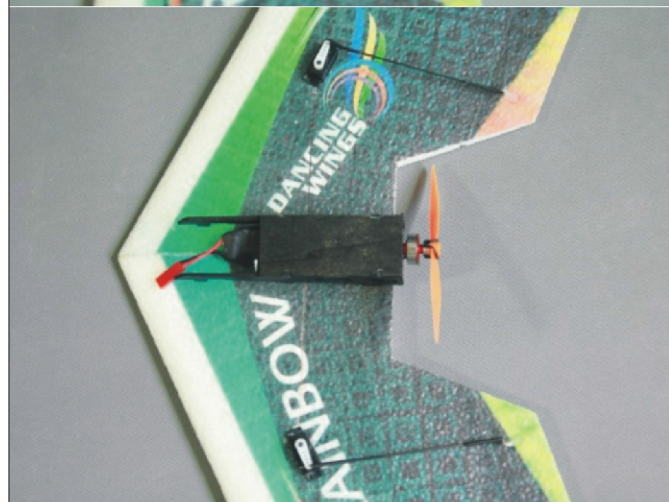


POWER SYSTEM ASSEMBLING

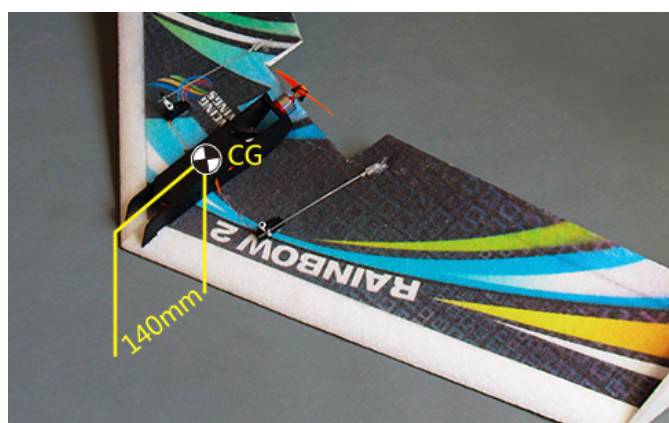
Tail push version



Assemble the motor on the wooden part, then compose as picture shows above.



Assemble the prop saver on motor shaft, and then fix the propeller; Cut a slot on fuselage, and fix the motor chamber, the ESC and Receiver could put inside.



Assemble the battery, adjust the centre of the gravity, and then you could start flying.