

## EVE-2000 Installation Instruction

It is Skywalker's latest masterpiece that acts as long-rang cruise professional aerial survey aircraft. Not surprisingly, it is called "Aerial Carrier". The players can modify cabin space at their will which can place IPAD3 directly.

With aggressive outlines and the most reasonable aerodynamic performance design, it has been a continuation of strong wind cooling design to keep the best working state. It is equipped with strong double front engines that can control aerial vehicle flexibly.



**Brand** Skywalker  
**Model** EVE-2000  
**Material** Imported EPO  
**wingspan** 2240mm  
**Fuselage length** 1270mm  
**CG** From Wings leading edge to backward 80-85mm

**Wing area** 49dm<sup>2</sup>  
**Flying weight** 3000-4500g  
**Max.wind resistance** 4 Grade  
**Takeoff** Hand cast, catapult  
**Landing** Glide down or parachute landing

### Standard configuration

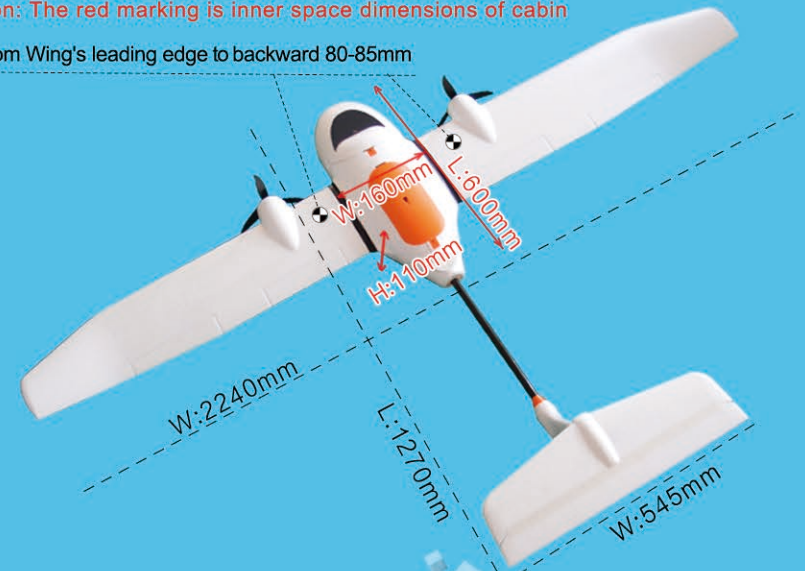
**Motor** 2816KV/650\*2pcs  
**ESC** 40A\*2pcs  
**Servo** 12g\*4pcs  
**UBEC** 6-8A

**Propeller** 1060E/EP three-blade  
**Battery** 5S-6S 10000-16000mah  
**Radio** 4CH



Attention: The red marking is inner space dimensions of cabin

CG: From Wing's leading edge to backward 80-85mm





## PNP ALLOCATION...



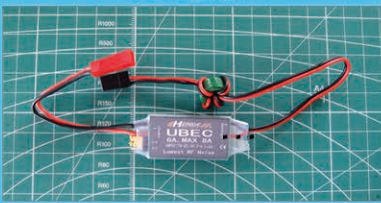
2816KV650



1060E/EP three-blade



40A ESC

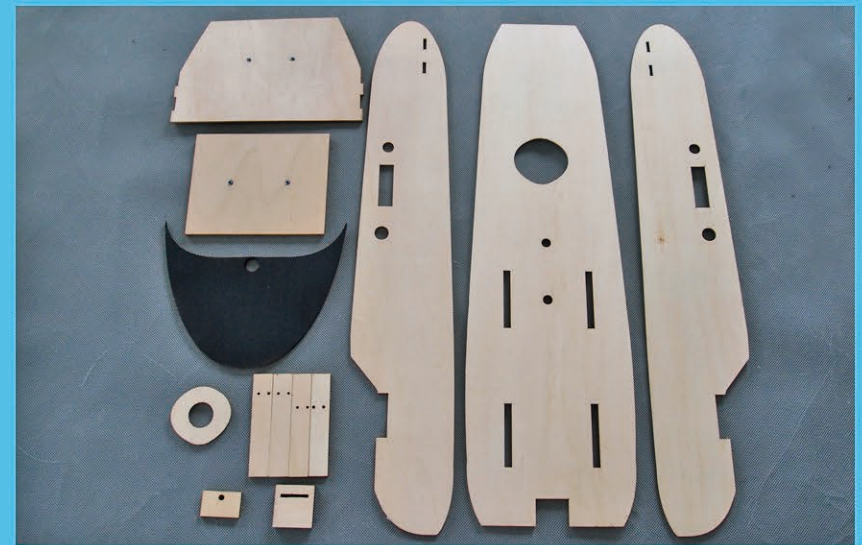


UBEC:6A



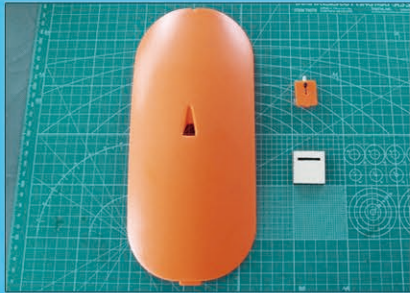
Servo 12g

## KIT ALLOCATION...

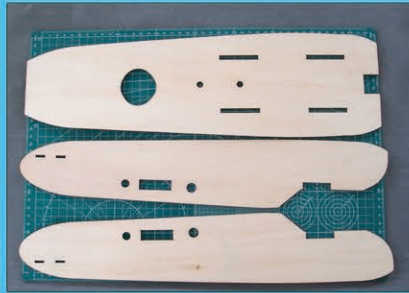




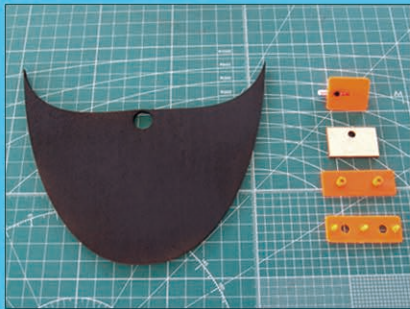
# KIT ALLOCATION...



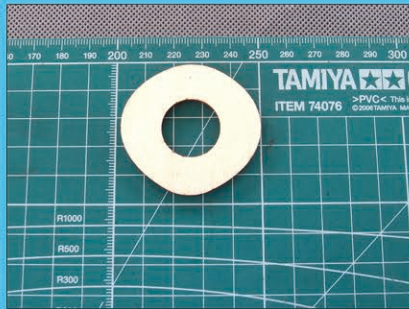
YF-1508Y-001



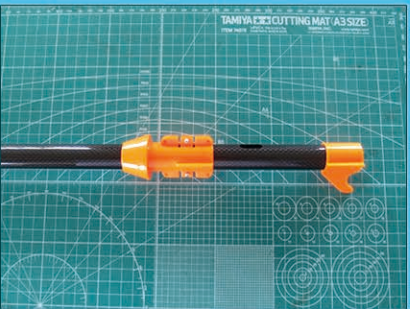
YF-1508Y-002



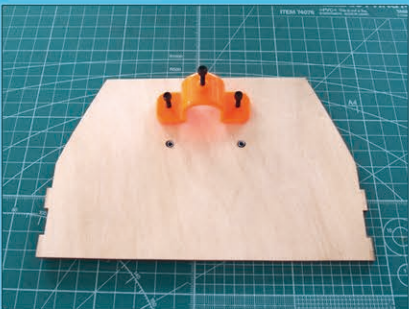
YF-1508Y-003



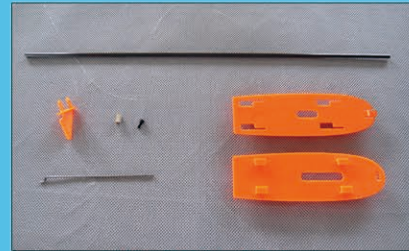
YF-1508Y-004



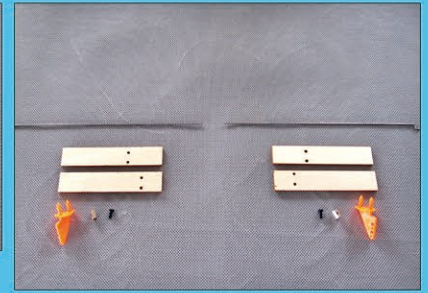
YF-1508Y-005



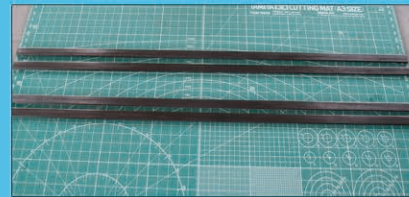
YF-1508Y-006



YF-1508Y-007



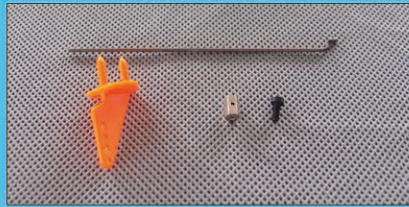
YF-1508Y-008



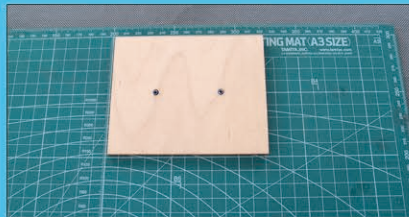
YF-1508Y-009



YF-1508Y-010



YF-1508Y-011



YF-1508Y-012



YF-1508Y-013



## ASSEMBLING STEPS...

Wings installation: Accessories are fixed by glue



Fig.1-2: Connect motor into motor mount by 4 hex screws(2.5mm)



Fig3-4: Connect well servo on the right wing, ESC and motor. (Attention: Link the same color of connection wires together, such as servo, ESC. The right wing motor turning connection method.)

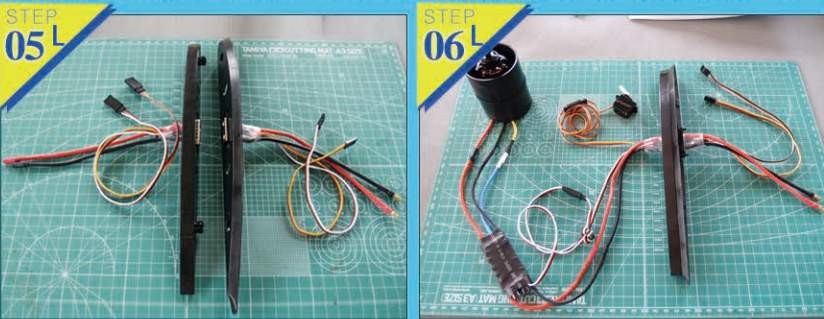


Fig5-6: Connect well servo on the left wing, ESC and motor. (Attention: Link the same color of connection wires together, such as servo, ESC. The left wing motor turning connection method.)

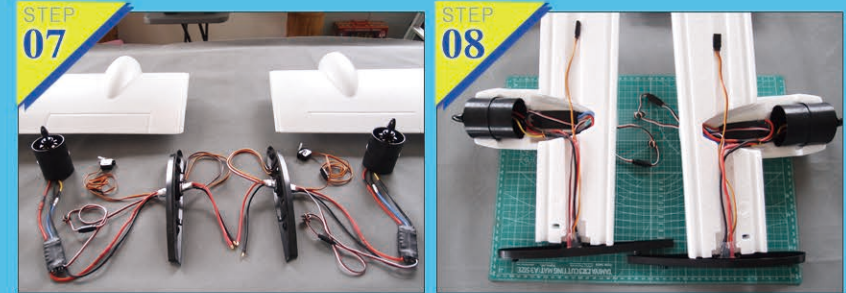


Fig7-8: Adhere tested power equipment to wing's retaining plate by glue

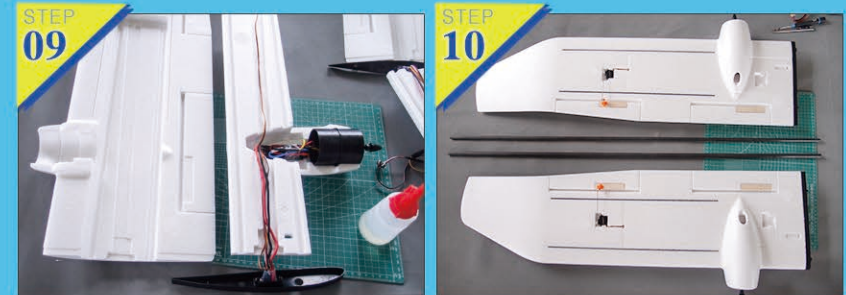


Fig9-10: Adhere wing's retaining plate to wing. At last, install carbon-fiber bracing sheet, servo

Fuselage installation: Accessories are fixed by glue

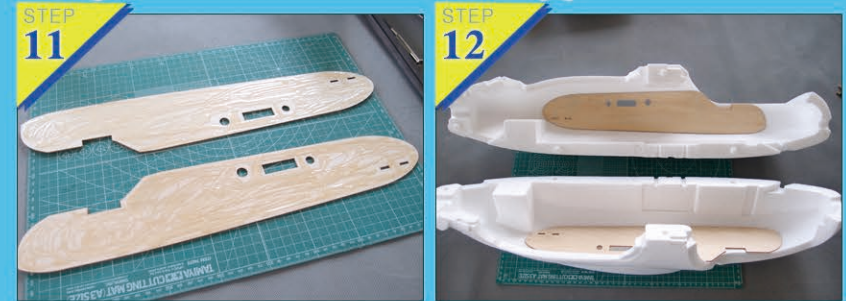


Fig11-12: Fix side plates with fuselage by glue to make sure the carbon horns are in good order



## ASSEMBLING STEPS.....

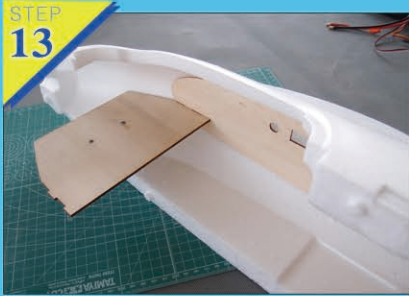


Fig13-14: Joint the left and right side of fuselage together as figure



Fig15-16: Adhere cable ties and velcro tape into the fuselage



Fig17-18: Adhere the plastic part on both side into the fuselage



Fig19-20: Install relative components in the fuselage and canopy hatch



Fig21-22: Install layer at the bottom of fuselage



Fig23-24: Install and fix the vertical stab, extended wires, plastic parts, 3K carbon fiber tube. (Attention: The long wires connect with elevator, the short wires connect with rudder.)



## ASSEMBLING STEPS...

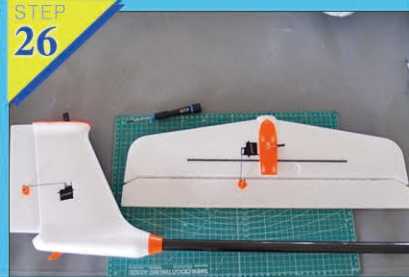
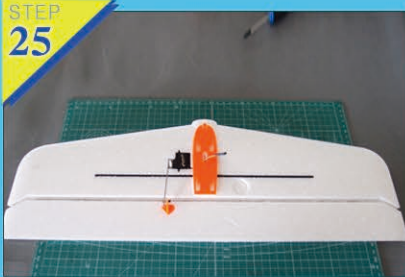


Fig25-26: Install well horizontal stab, carbon tube, plastic parts and servo horn as figure



Fig27-28: Connect well the horizontal stab with vertical stab, fix 3K carbon tube on the fuselage by 3 screws(2.5mm)

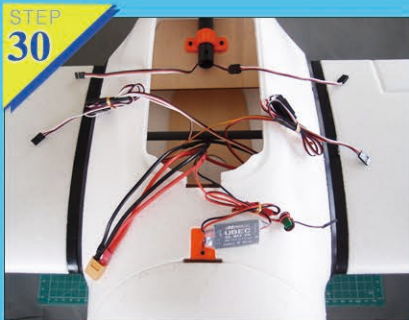
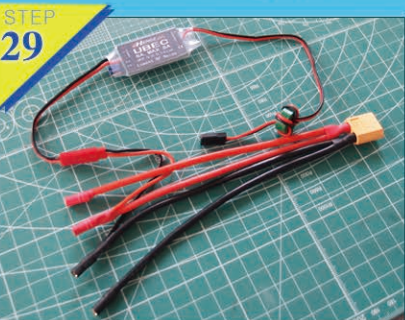


Fig29-30: Connect well the fuselage with wings. Then, connect two ESC by Y wire and connect two ailerons by another Y wire, link UBEC together with standard battery wires

## DISPLAY...

