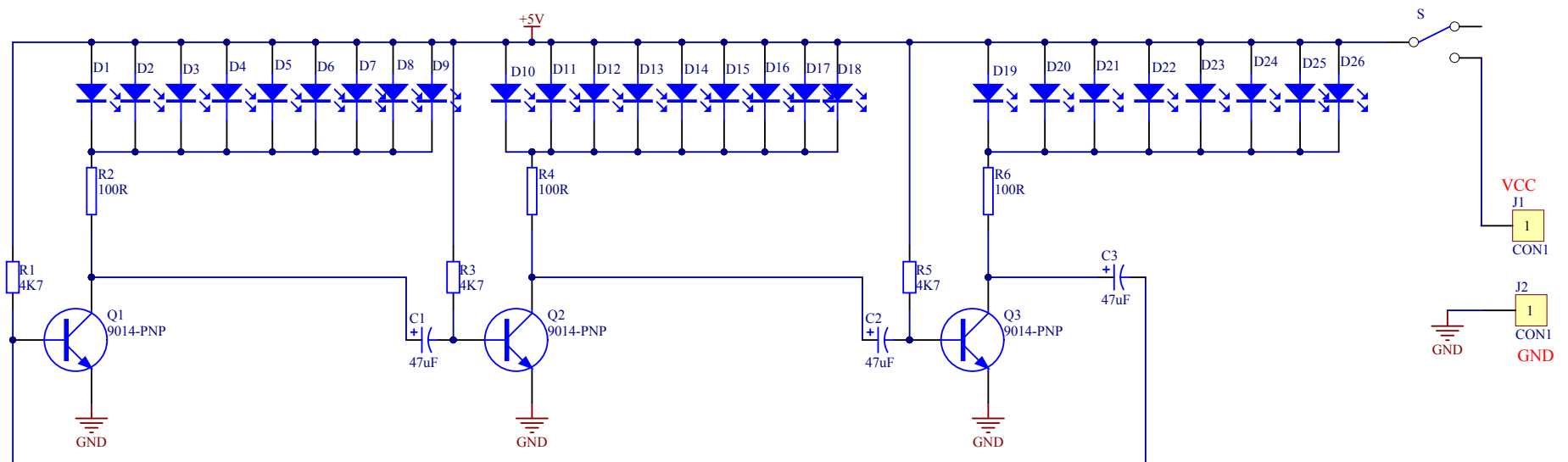


Schematic



With Music Version Introduction

Note: Only support mp3 format music.

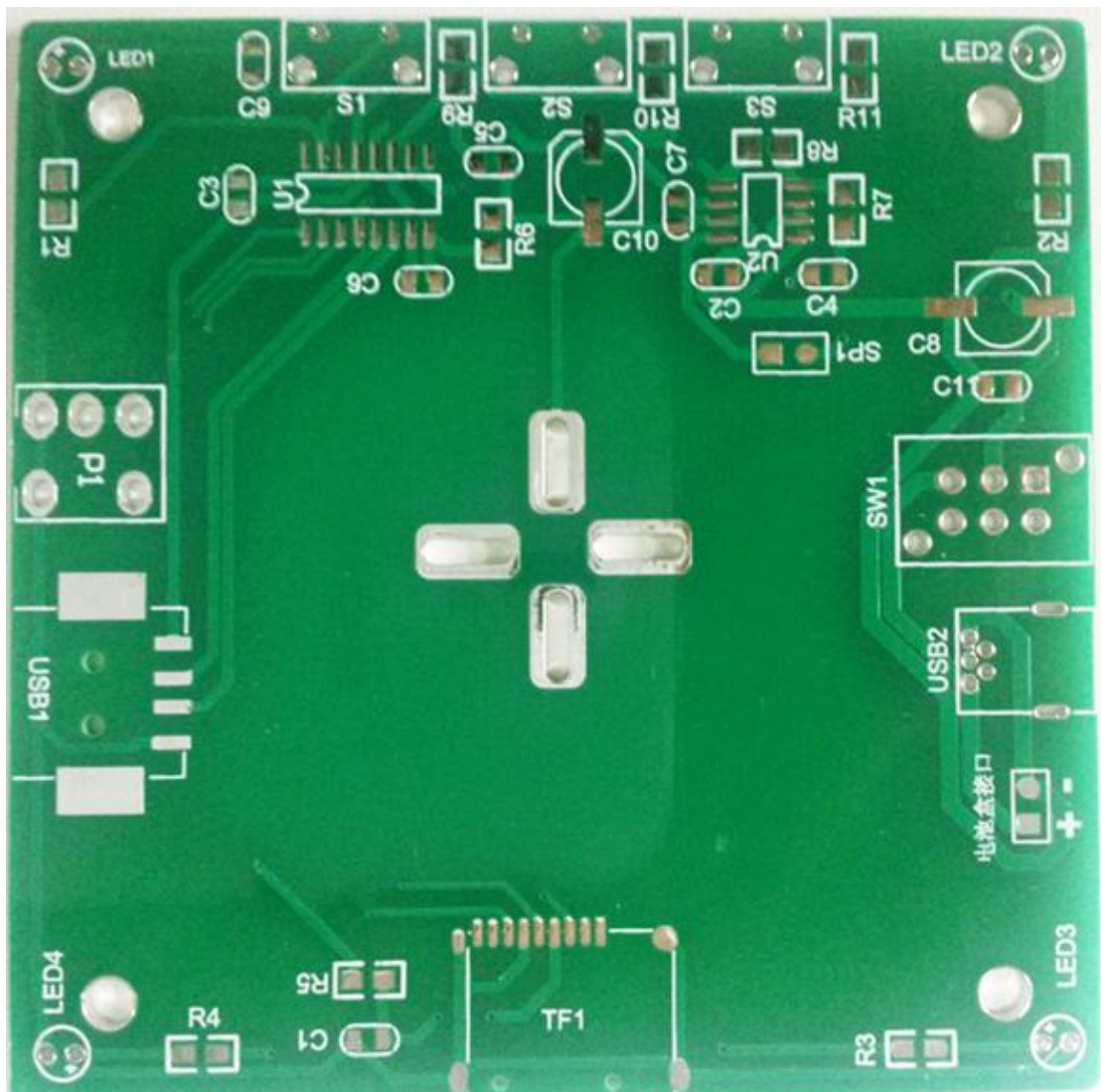
Package list:

Parameter	Numeral on board	Note	Specification	Qua.
1uf (105)	C1, C2, C3, C5, C6, C7	No direction	0805 capacitors	7
104(0.1uf)	C4, C11	No direction	0805 capacitors	2
100PF	C9	No direction	0805 capacitors	2
1K(102)	R1、R2、R3、R4	No direction	0805 Resistors	5
4.7R(4R7)	R5	No direction	0805 capacitors	2
0R(000)	R6	No direction	0805 capacitors	2
20K(203)	R7	No direction	0805 capacitors	2
47K(473)	R8	No direction	0805 capacitors	2
22K(223)	R9	No direction	0805 capacitors	2
33K(333)	R10	No direction	0805 capacitors	2
51K(513)	R11	No direction	0805 capacitors	2
TF socket	TF1		TF card socket	1
16pin chip	U1	Directional	S0-16 SMD	1
8002B	U2	Directional	S0-8 SMD	1
Min USB	USB2		USB socket	1
Insert U disk	USB1		USB socket	1
220UF/16V	C8、C10	Directional	Electrolytic capacitors	2
Tact Switch	S1、S2、S3		Lateral leg 6*6 *10	3
3mm pink led	LED1, LED2, LED3, LED4	Directional	3mm led	5
Audio port	P1		Audio socket	1
Speaker Interface	SP1		3W speaker	1
Self-locking switch	SW1		Switch	1
100R	A:R2, R4, R6 B:R2, R4, R6	No direction	0.25W Plug-resistance	7

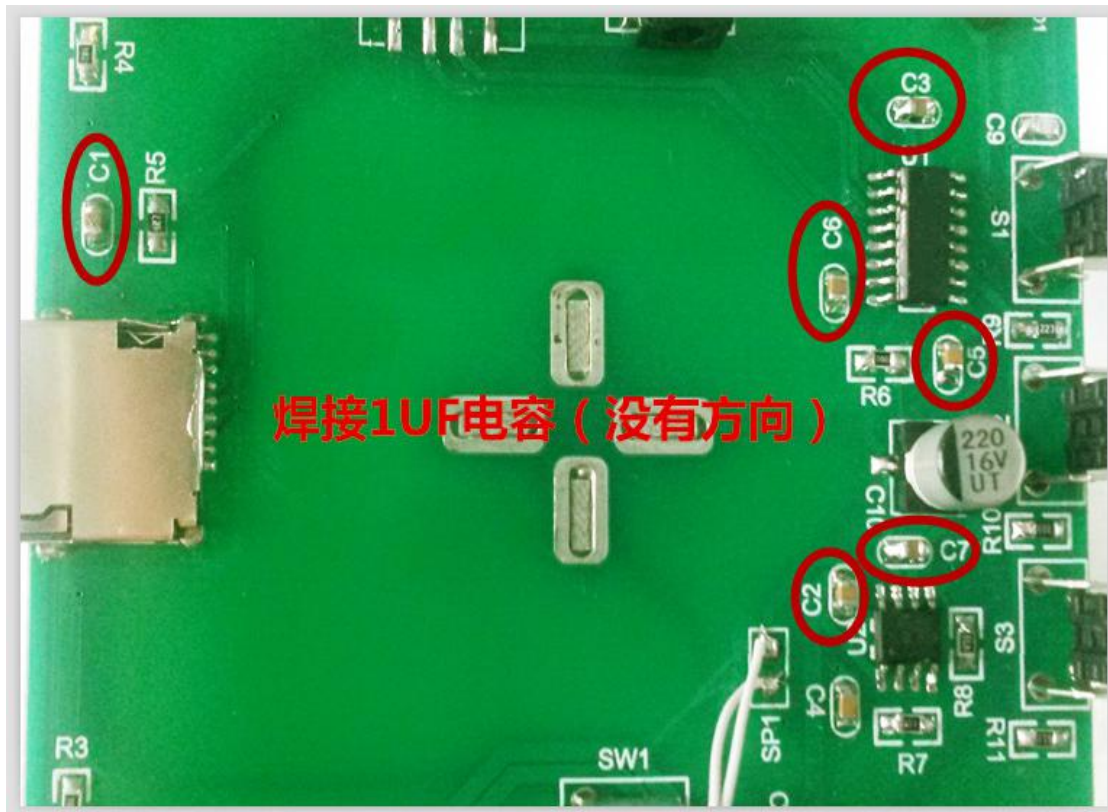
4.7K	A:R1, R3, R5 B:R1, R3, R5	No direction	0.25W Plug-resistance	7
47uf/16v	A:C1, C2, C3 B:C1, C2, C3	Directional	Plug-in electrolytic capacitors	6
S9014	A:Q1, Q2, Q3 B:Q1, Q2, Q3	Directional	Transistor	6
led	A:D1~D26 B:D1~D26	Directional	5mm RGB led	58

1. Soldering baseboard (note: all the components on the base must be soldered to the back)

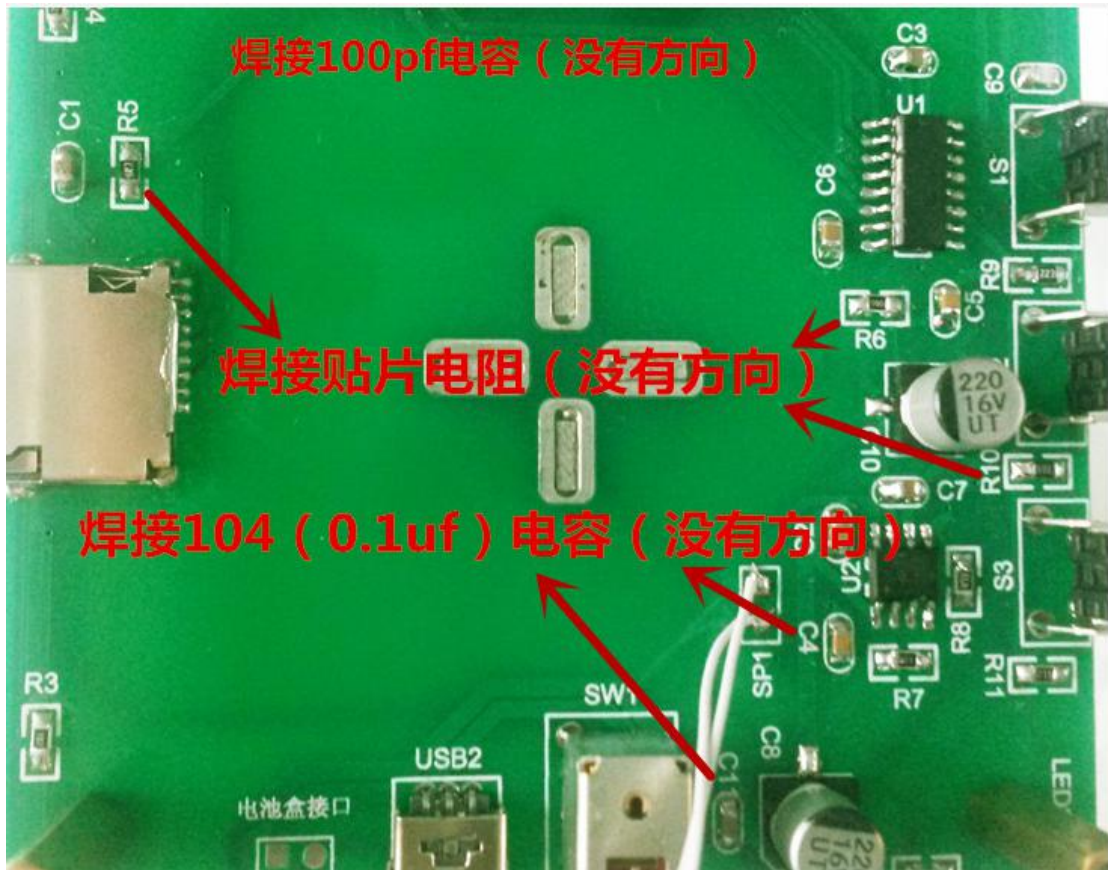
1) Back side of baseboard



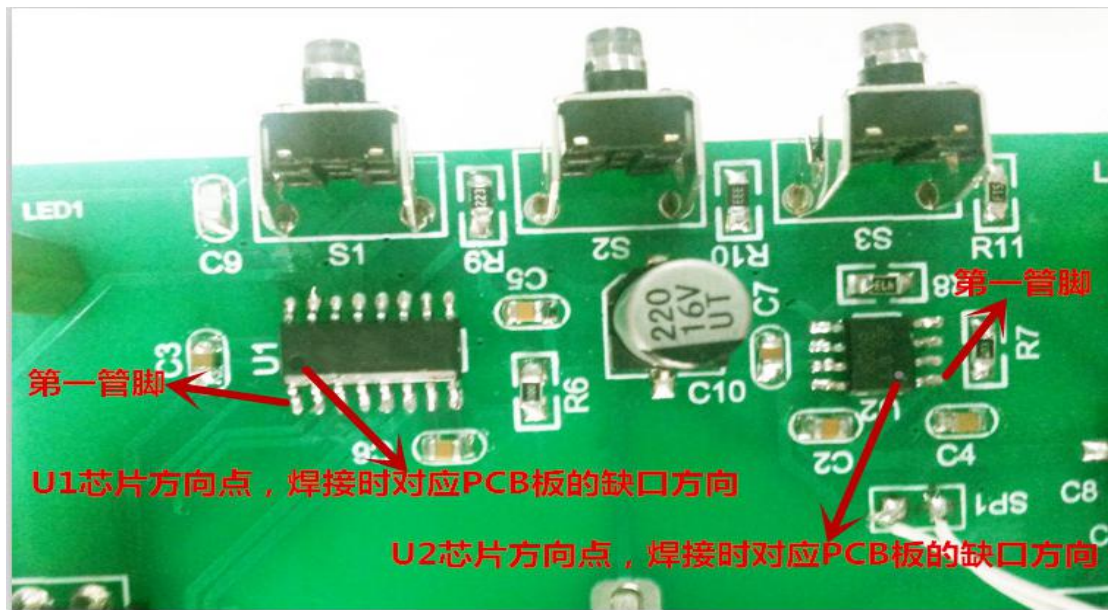
2) Soldering 1uf capacitor (105), there is no direction



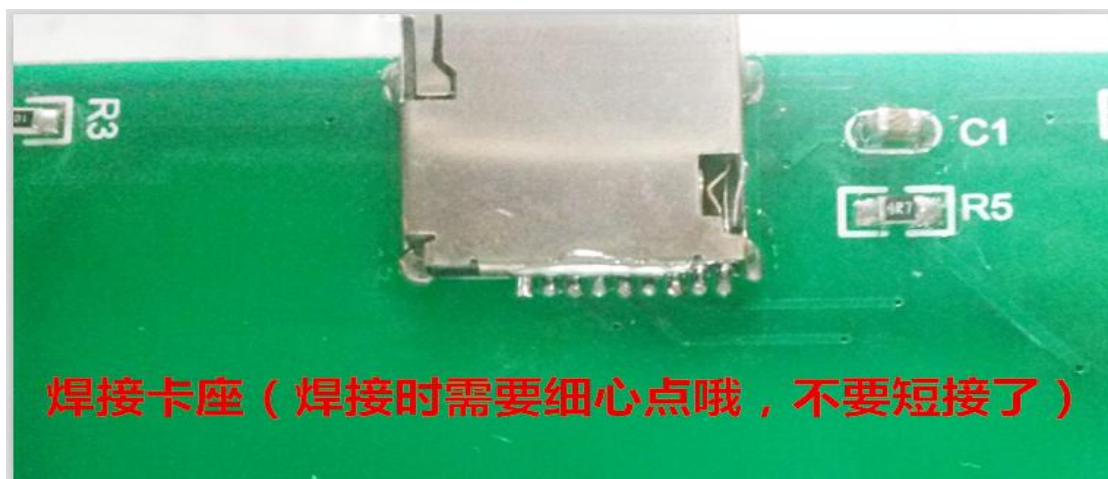
3) Soldering SMD resistor capacitor (no direction)



4) Soldering U1, U2 chip (direction)



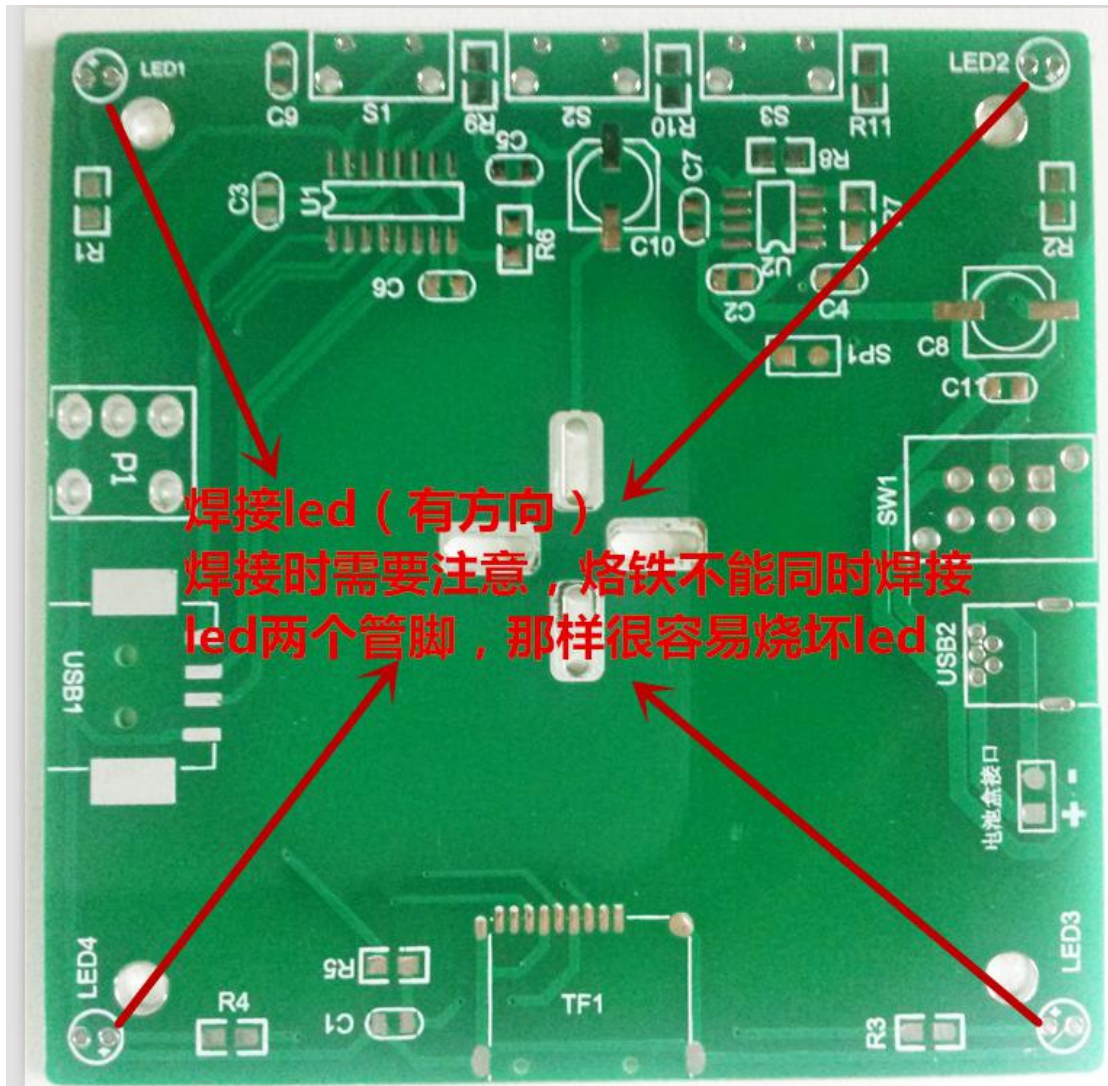
5) Soldering TF socket (needs more careful when soldering, do not short circuit)



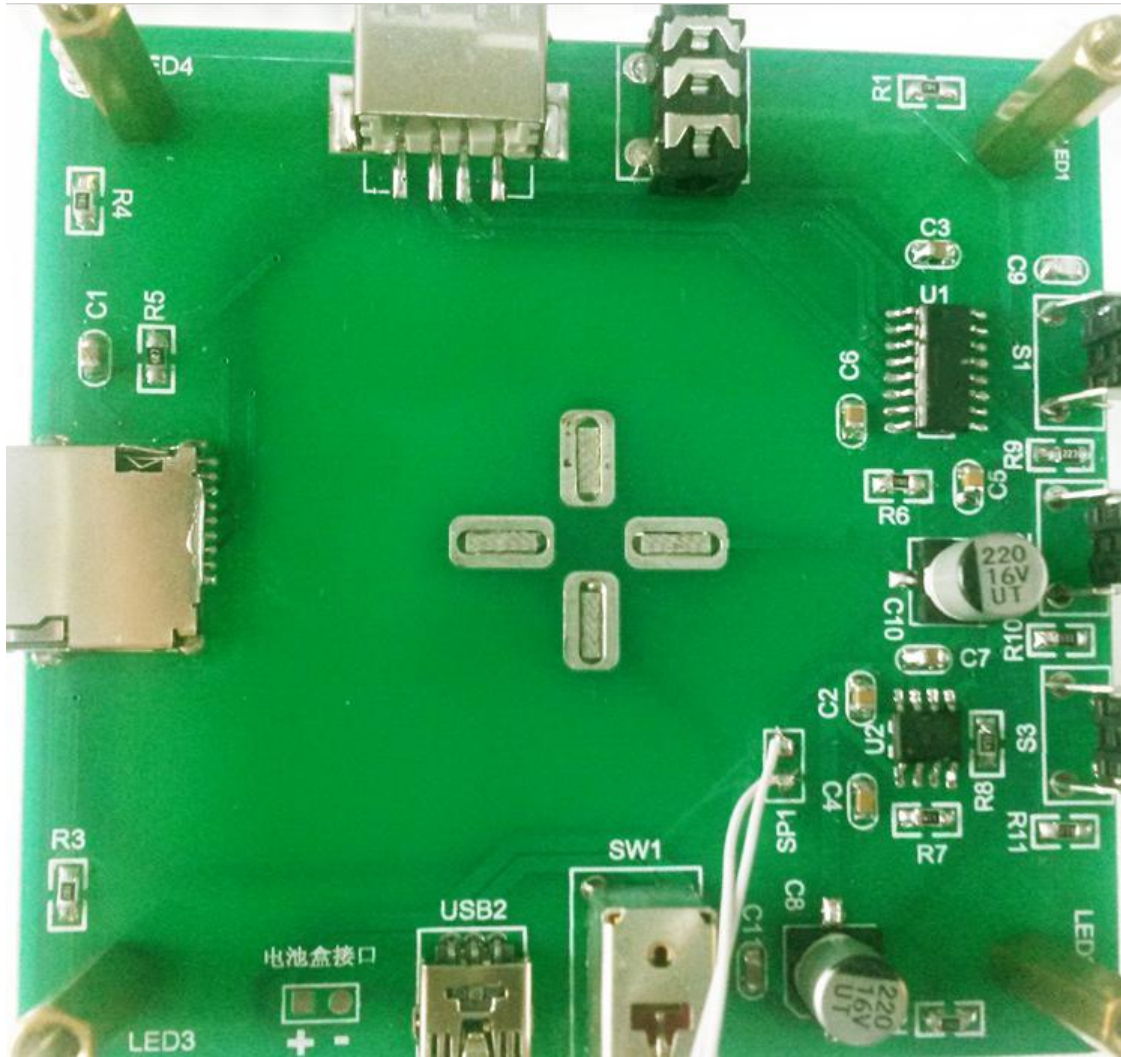
6) Soldering button (note soldering on the back side)



7) Four corners LED soldering (directional), need to pay attention when soldering, can not be soldered two pins at the same time, otherwise it will burn led

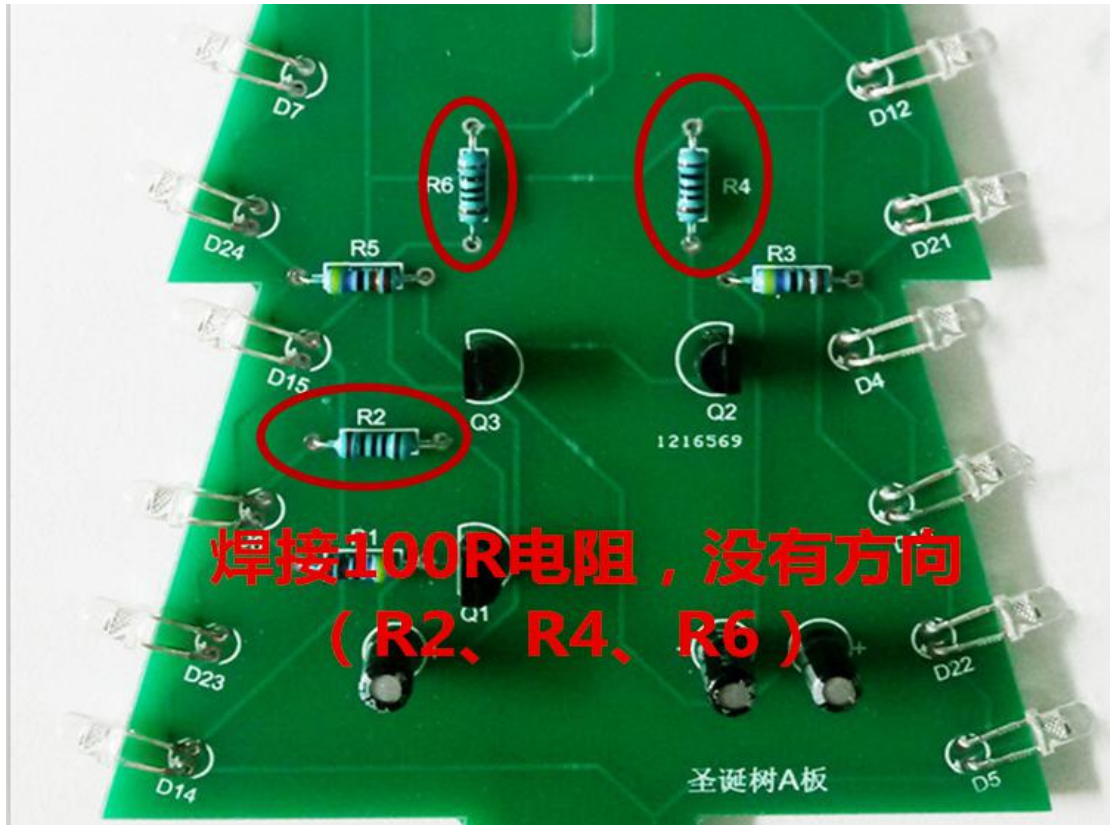


8) After soldering the baseboard

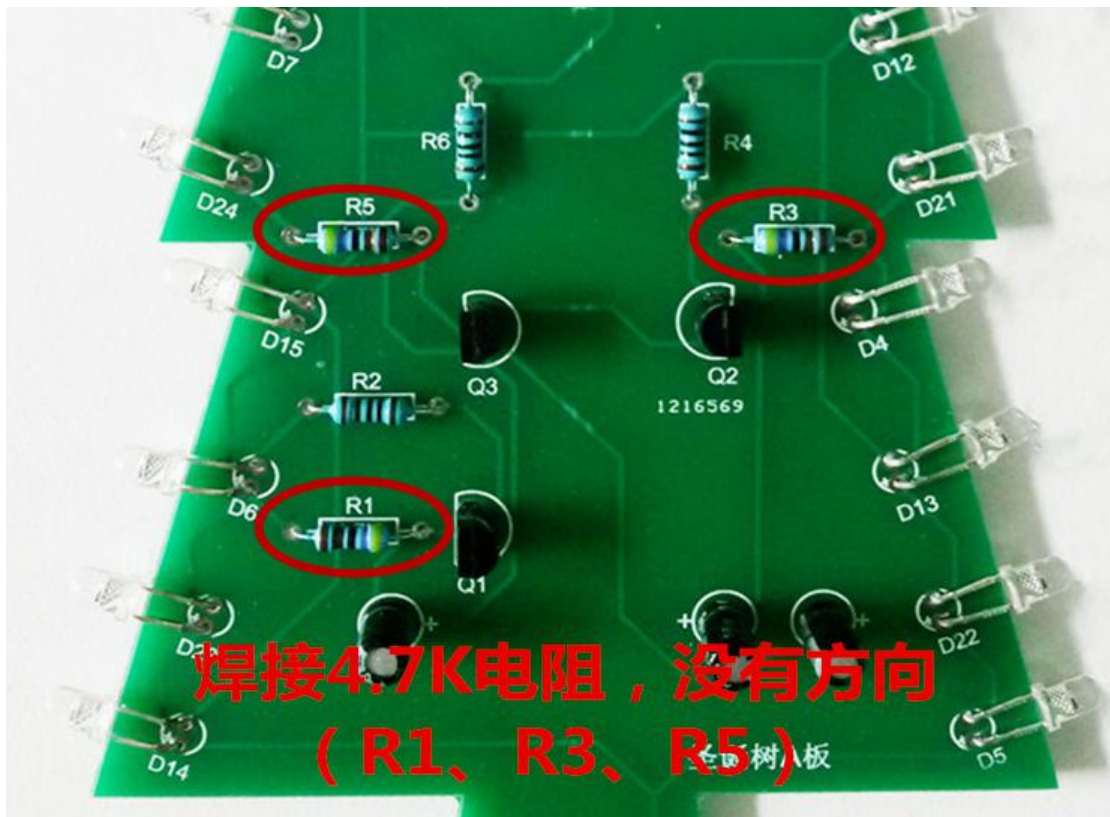


2. Christmas tree A, B board soldering (method is the same)

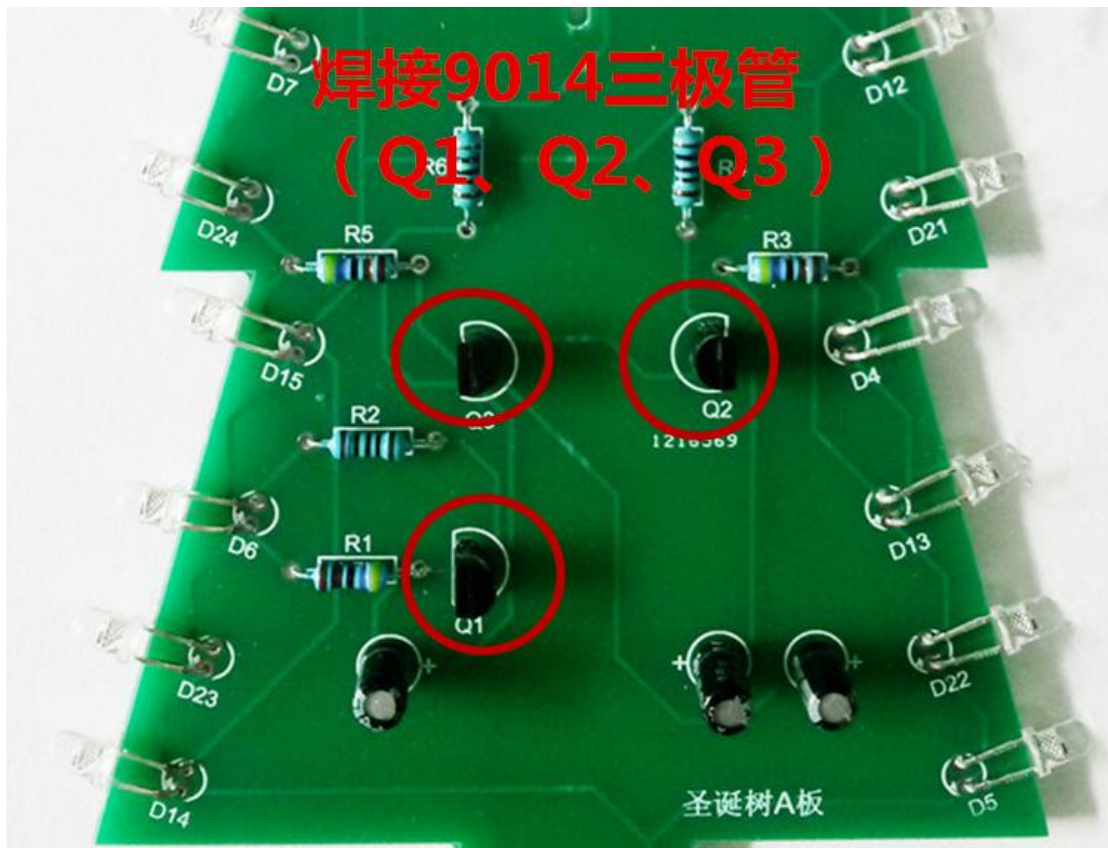
1) Soldering resistance 100R (no direction, as the picture show)



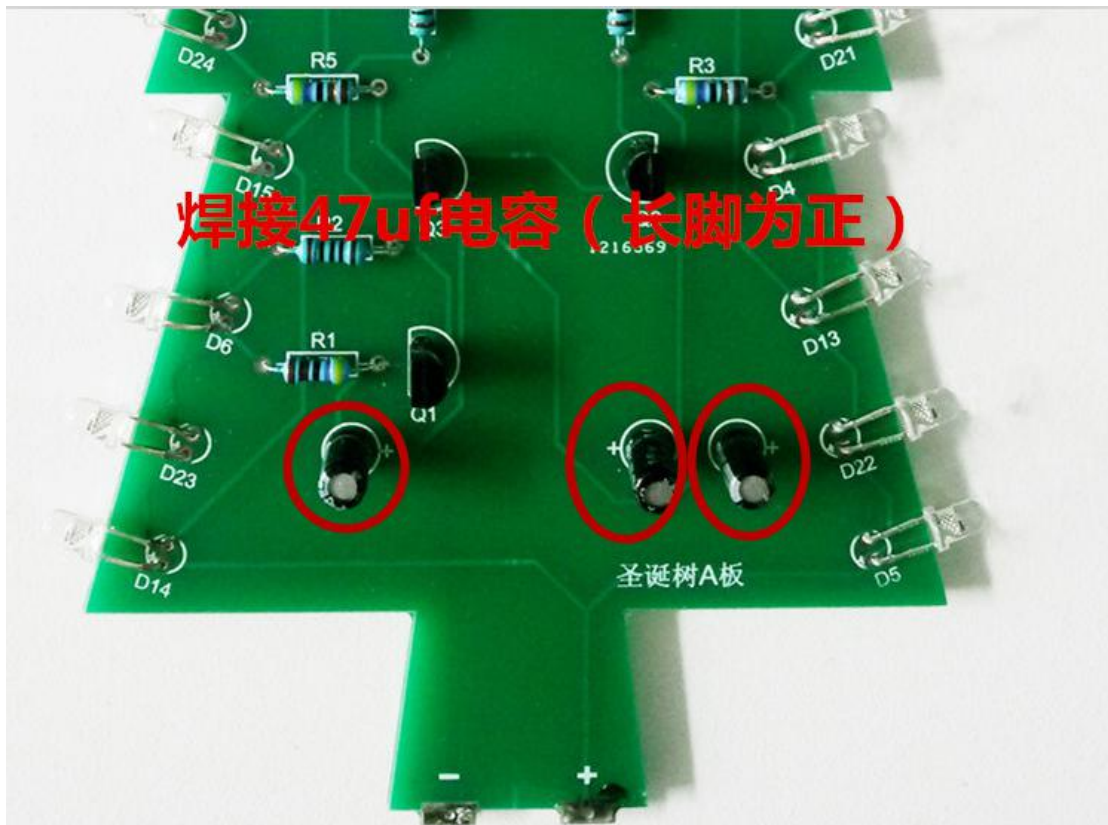
2) Soldering 4.7K resistor (no direction, as the picture show)



3) Soldering 9014 (there is a direction, as the picture show)



4) Soldering 47uf electrolytic capacitors (directional, long foot is positive)



5) Soldering LED (directional, long foot is positive, need to pay attention when

soldering, can not be soldered two pins at the same time, otherwise it will burn led)



6) After soldered A and B boards



7) Soldering top led (Note: need to combine A and B plate at first, long foot is positive)



3. A, B board and backplane connection diagram:

http://www.banggood.com/search/christmas-tree/2153-0-0-1-1-44-0-price-0-0_p-1.html

1) After A and B board combined, the "+" corresponding to the "+" sign (while watching from the self-locking switch):

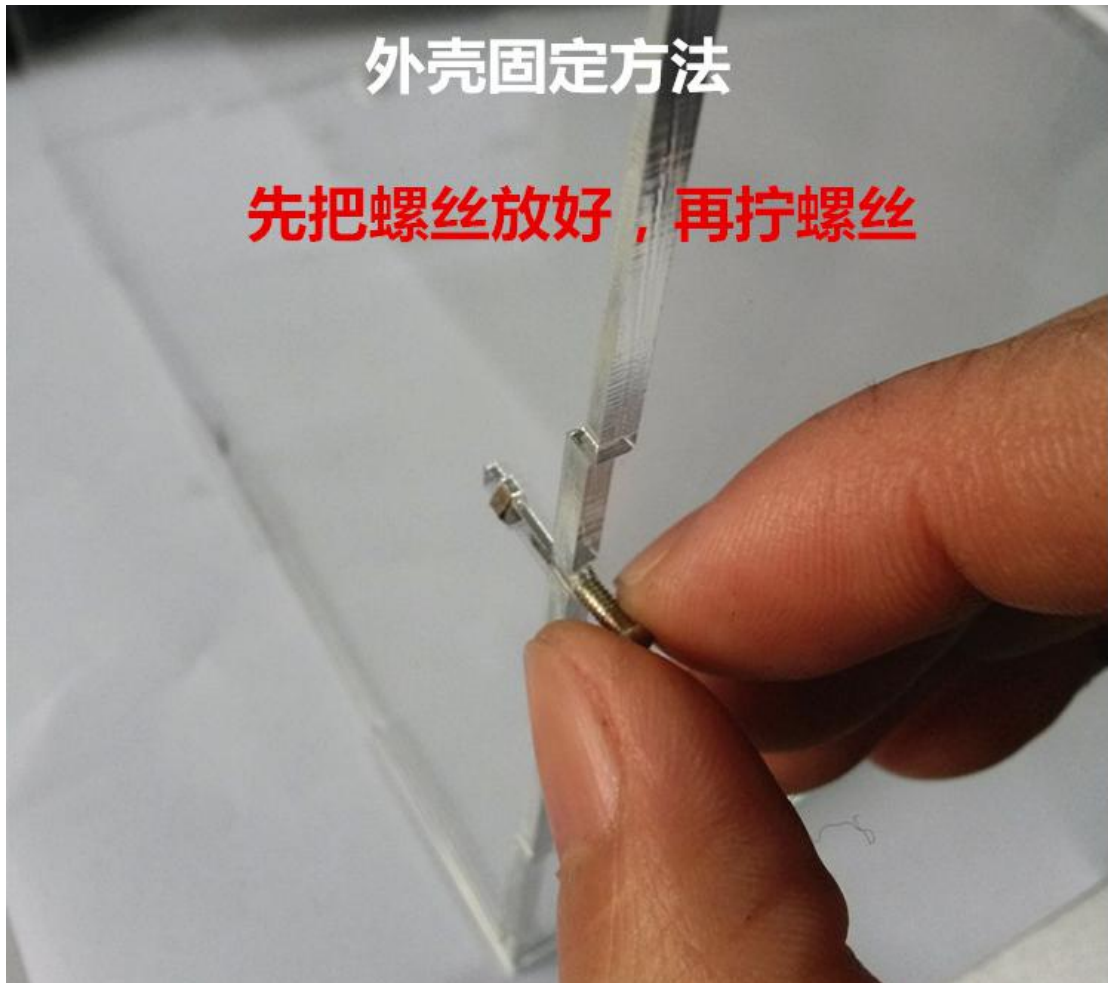


2) the "-" corresponding to the "-" sign

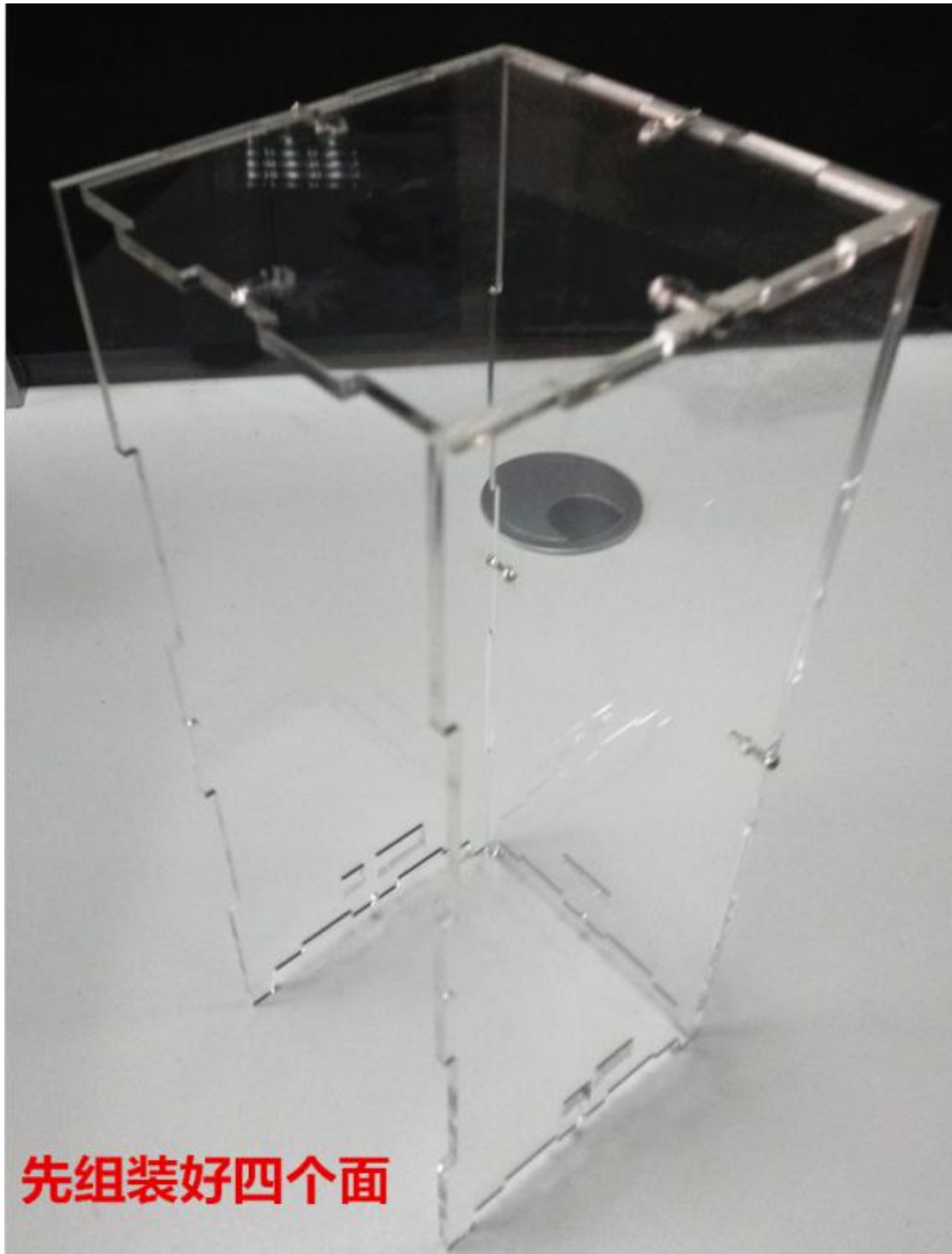


4. The assembly of the housing

1) A method of assembling the housing (Fixing the screw nut, and put into the screw)

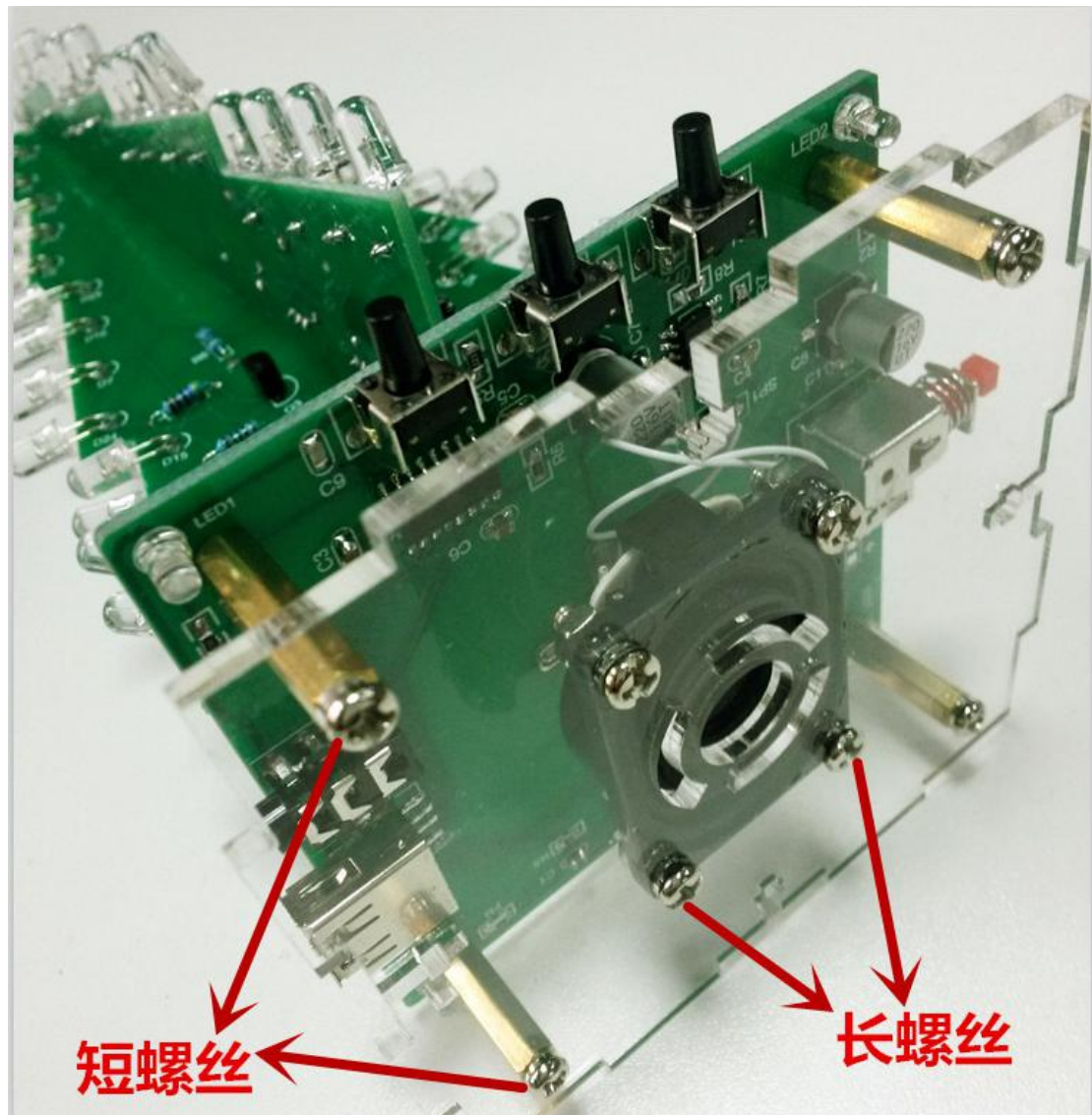


2) First assembled four faces

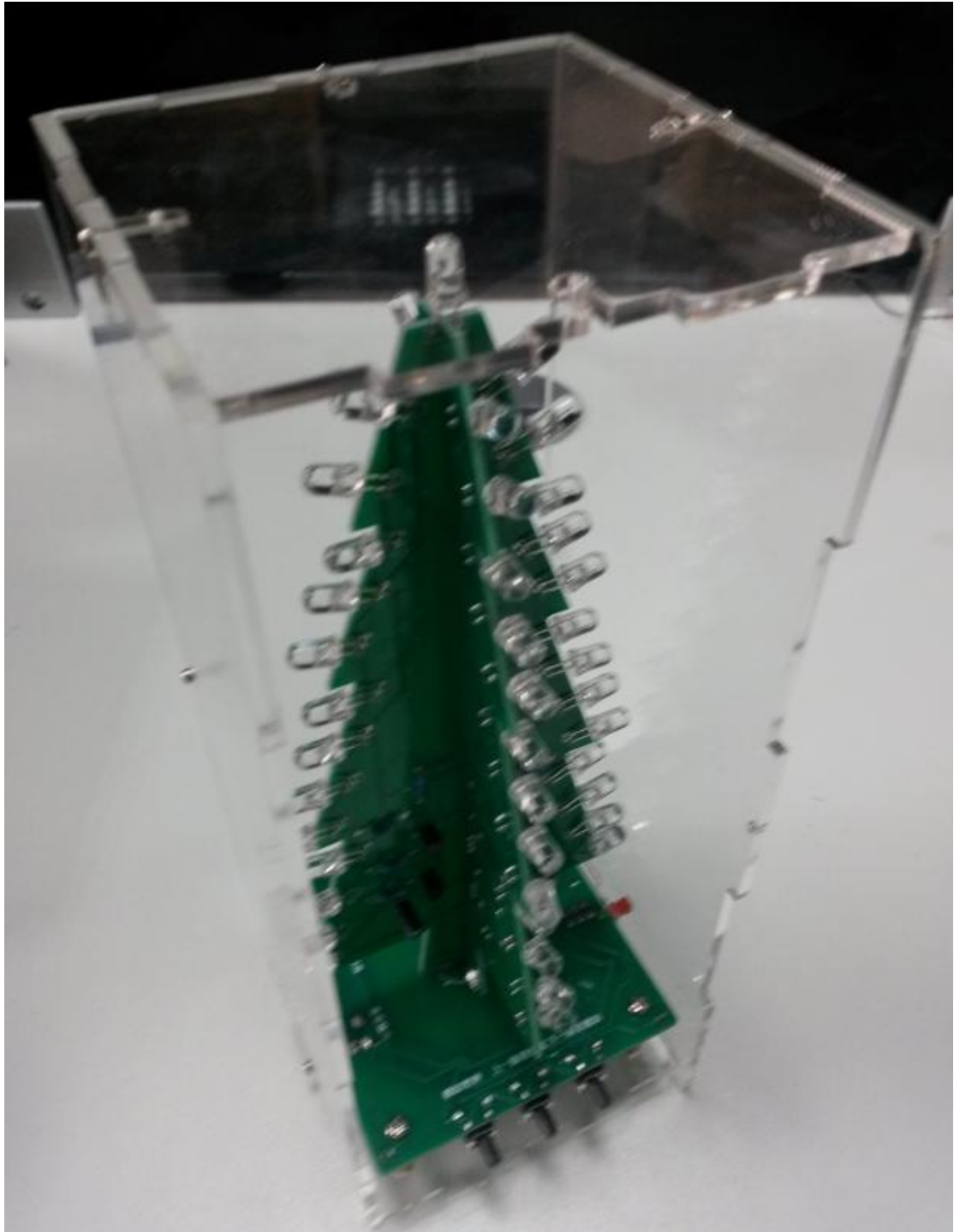


先组装好四个面

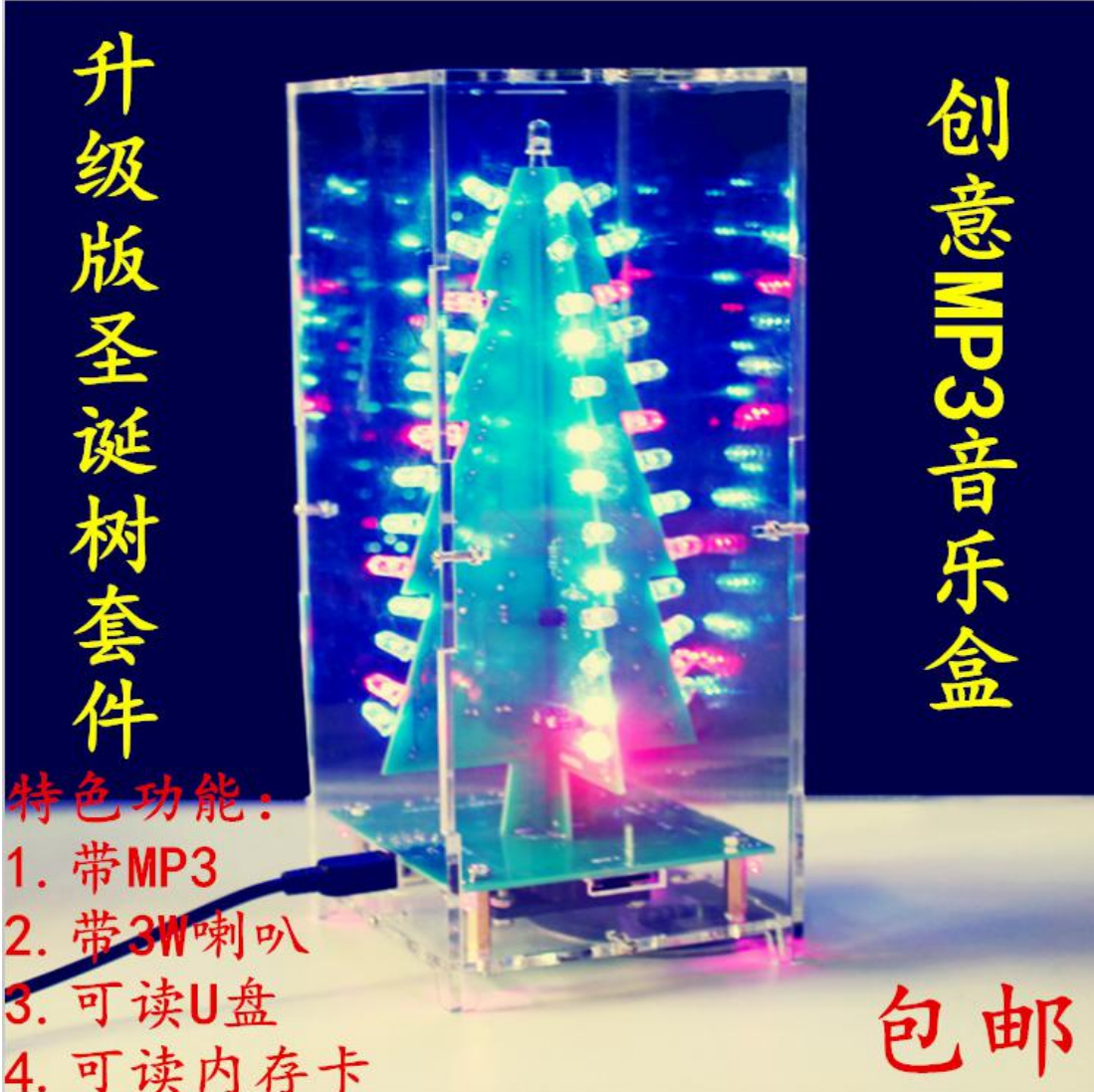
3) fixed plate



4) Install the base plate



5) Finish



升级版圣诞树套件

创意MP3音乐盒

特色功能：

1. 带MP3
2. 带3W喇叭
3. 可读U盘
4. 可读内存卡

包邮