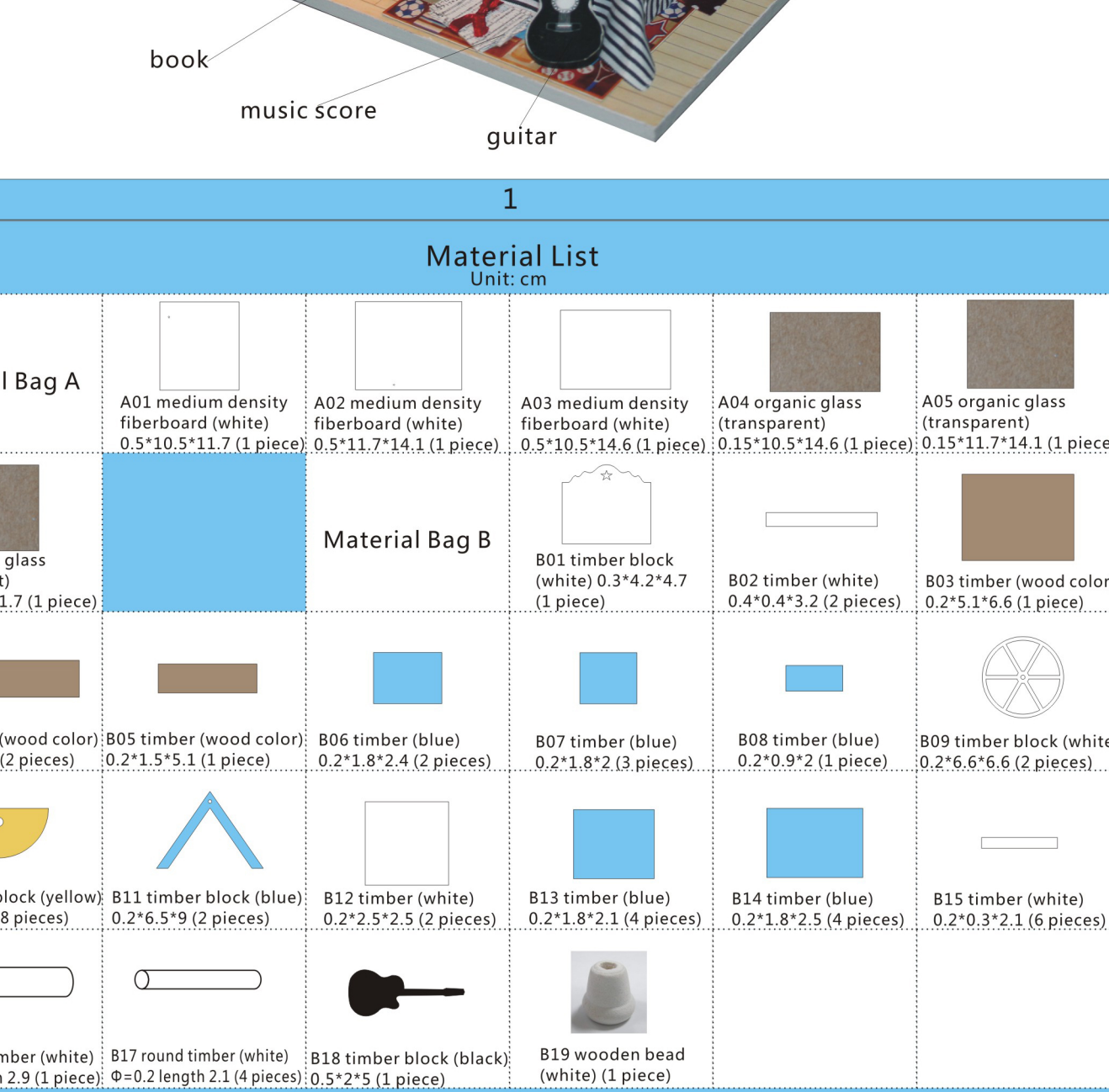


Going with me



D009 Detailed User Manual
 Note: The product has a dustproof cover which is composed of three pieces of organic glass. Timber, cloth and board might be slightly different between batches, please refer to the real product for detailed information. (Please refer printed paper to the first part of this manual)

D009 Product Introduction



1

Material List Unit:cm

Material Bag A		Material Bag B		Material Bag C	
A01 medium density fiberboard (white) 0.5*10.5*11.7 (1 piece)	A02 medium density fiberboard (white) 0.5*11.7*14.1 (1 piece)	A03 medium density fiberboard (white) 0.5*10.5*14.6 (1 piece)	A04 organic glass (transparent) 0.15*10.5*14.6 (1 piece)	A05 organic glass (transparent) 0.15*11.7*14.1 (1 piece)	A06 organic glass (transparent) 0.15*9.85*11.7 (1 piece)
B04 timber (wood color) 0.2*1.5*6.4 (2 pieces)	B05 timber (wood color) 0.2*1.5*5.1 (1 piece)	B06 timber (blue) 0.2*1.8*2.4 (2 pieces)	B07 timber (blue) 0.2*1.8*2 (3 pieces)	B08 timber (blue) 0.2*0.9*2 (1 piece)	B09 timber block (white) 0.2*1.5*6.6 (2 pieces)
B10 timber block (yellow) 0.2*1.2*2.8 (8 pieces)	B11 timber block (blue) 0.2*6.5*9 (2 pieces)	B12 timber (white) 0.2*2.5*2.5 (2 pieces)	B13 timber (blue) 0.2*1.8*2.1 (4 pieces)	B14 timber (blue) 0.2*1.8*2.4 (4 pieces)	B15 timber (white) 0.2*11.5*2.1 (6 pieces)
B16 round timber (white) Φ=0.3 length 2.9 (1 piece)	B17 round timber (white) Φ=0.2 length 2.1 (4 pieces)	B18 timber block (black) 0.5*2*5 (1 piece)	B19 wooden bead (white) (1 piece)		

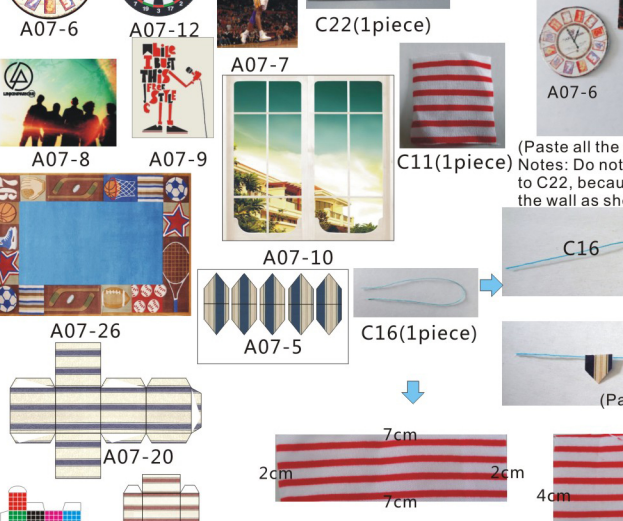
2

Material List Unit:cm

C01 non-woven fabrics (white) 9*10 (1 piece)	C02 white dotted cloth (purple) 3*13 (1 piece)	C03 chambray (black) 5.5*16 (1 piece)	C04 cloth (light blue) 5.5*13 (1 piece)	C05 cloth (dark blue) 3*6 (1 piece)
C06 iron wire (white) 4cm (1 piece)	C07 plastic bead (white) (1 piece)	C08 bead chain (silver) 1.5cm (1 piece)	C09 cotton ball (yellow) (3 pieces)	C10 non-woven fabrics (yellow) 4*4 (1 piece)
C11 chamber (red) 7*11.5 (1 piece)	C12 lace (red) 7cm (1 piece)	C13 torus (silver) (2 pieces)	C14 thick iron wire (silver) 3cm (1 piece)	C15 plastic bead (transparent) (1 piece)
C16 string (blue) 10cm (2 pieces)	C17 small plastic bead (white) (9 pieces)	C18 foam (purple) (some)	C19 iron wire (green) 6cm (1 piece)	C20 paper (green) 2*3 (1 piece)
C21 dried flower (green) (some)	C22 paperboard (white) 8*8 (1 piece)	C23 gummed paper (white) 2*4 (1 piece)	C24 bulb wire (2 pieces)	C25 battery box (black) (1 piece)
C26 screw (black) (1 piece)	C27 sand paper (1 piece)	C28 cotton (white) (some)		

3

Necessary Tools



4

Notes:

The color picture on package is an effect picture of the product. Please assemble it according to the picture.
 Please prepare tools, including knife, ruler, scissor, pencil, eraser, needle, etc.
 Sandpaper in the package can be used to polish corners of wooden materials.
 Please take out material bags in sequence so as to assemble the product by stages.
 During the process of assembling, please refer to the diagrams accordingly.

Cautions:

Please do not allow infants and young children to play with the package for avoiding dangerous accidents!
 The product must be taken out by adults and then played by children.
 Children must be under the custody of adults when playing with the product.

Tips for assembling

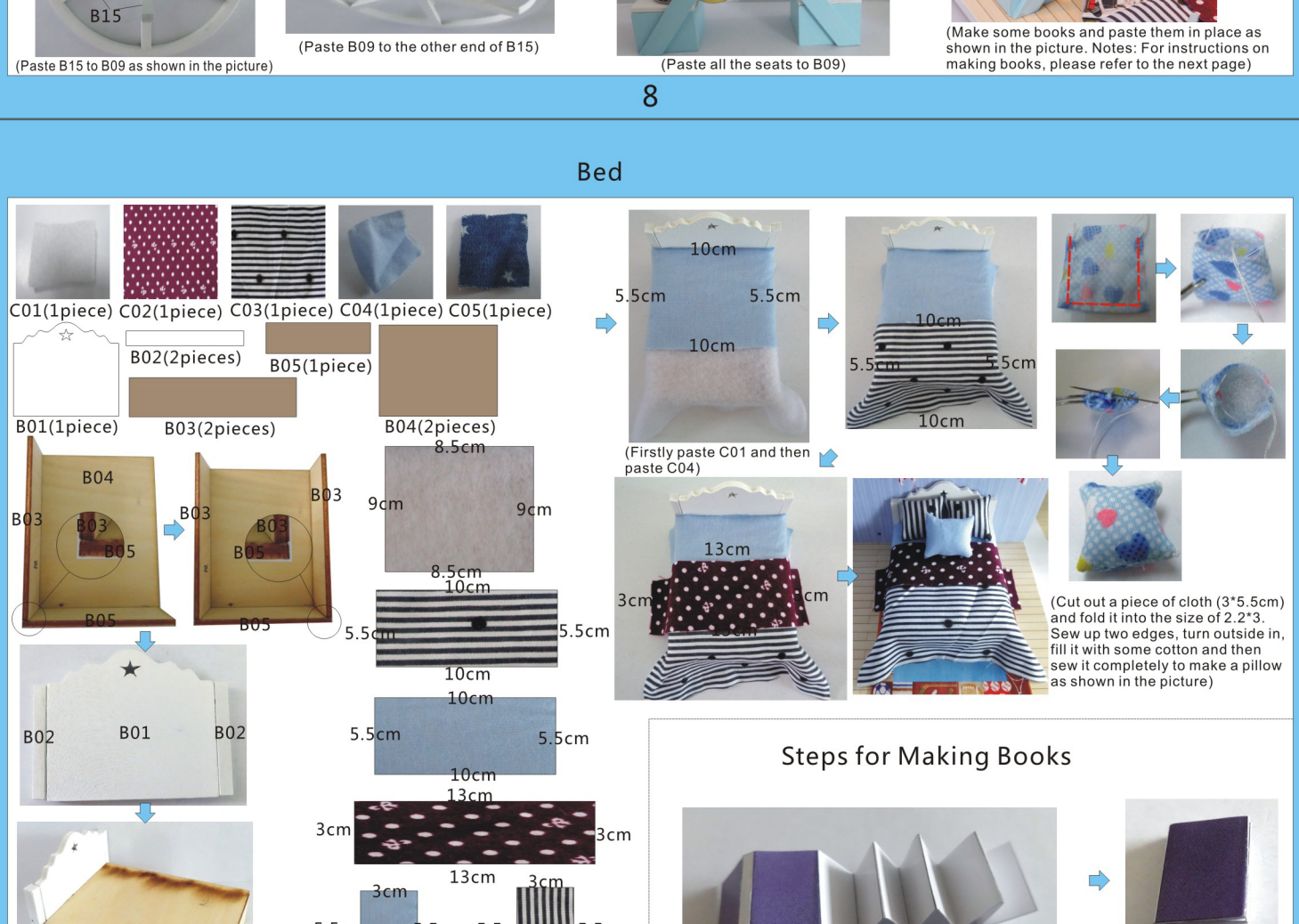
- Please read the user manual carefully before assembling.
- Firstly polish corners of wooden materials by sandpaper, and then assemble every part fully according to Part Number.
- Use tweezers to help pasting tiny materials.
- Use pliers to shape iron wire.
- Dotted lines on paper accessories are folding line, and grey parts are for pasting.
- It is suggested to paste paper accessories by double faced adhesive tape.

Outer Frame and Wall Lamp



5

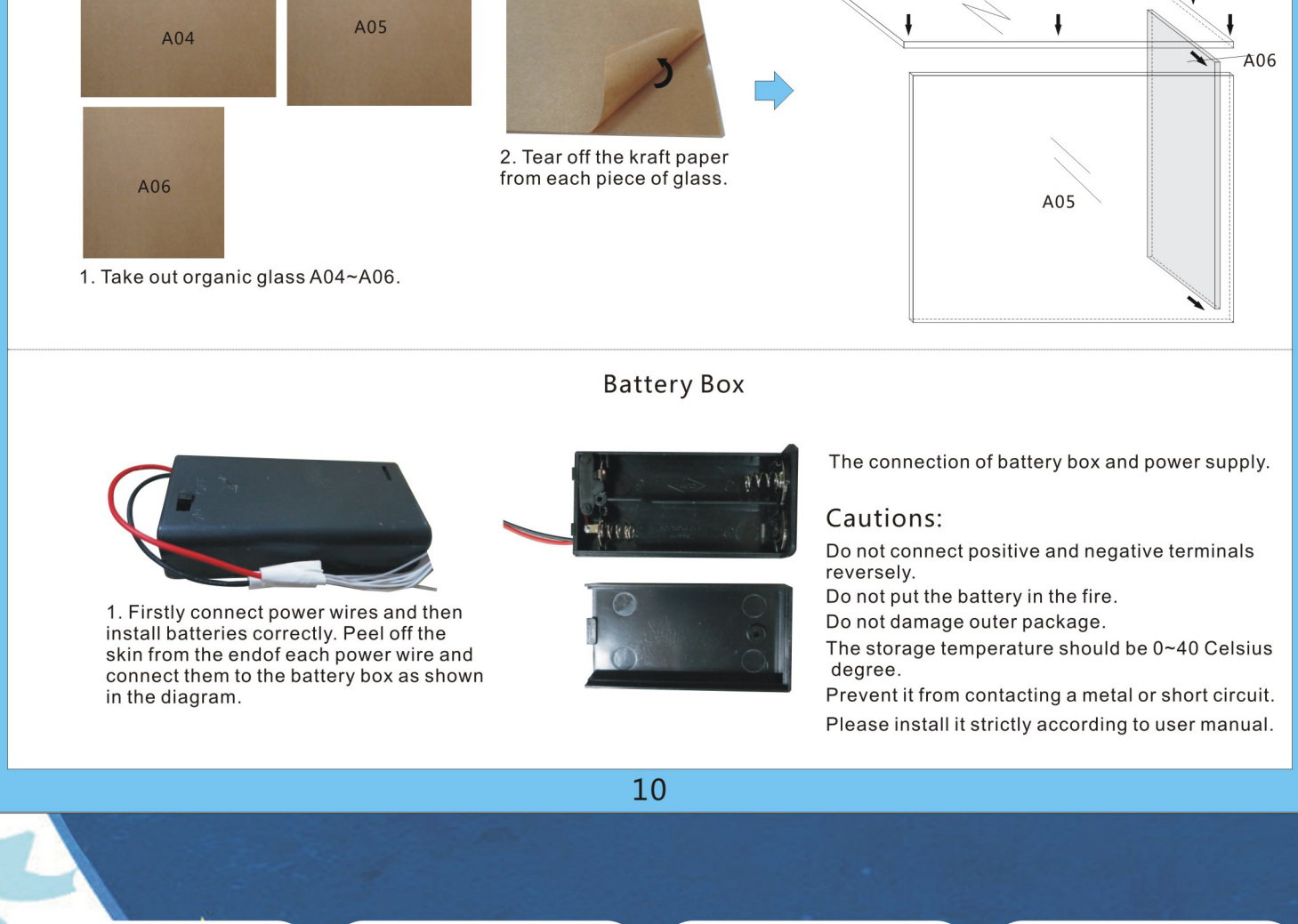
Decorations on the Wall



6

Bedside Table

Chick and Duckling



7

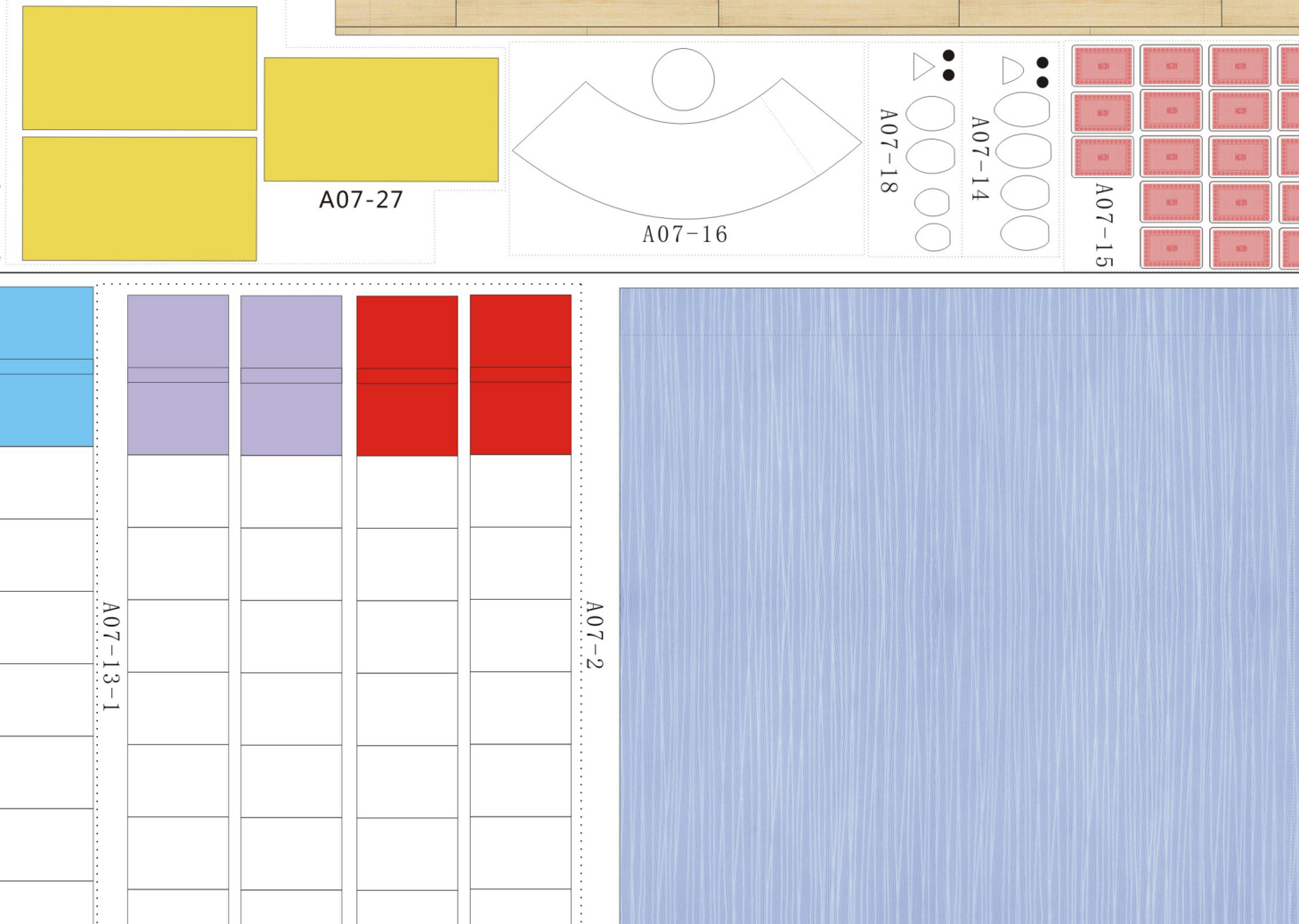
Sky Wheel

Music Score



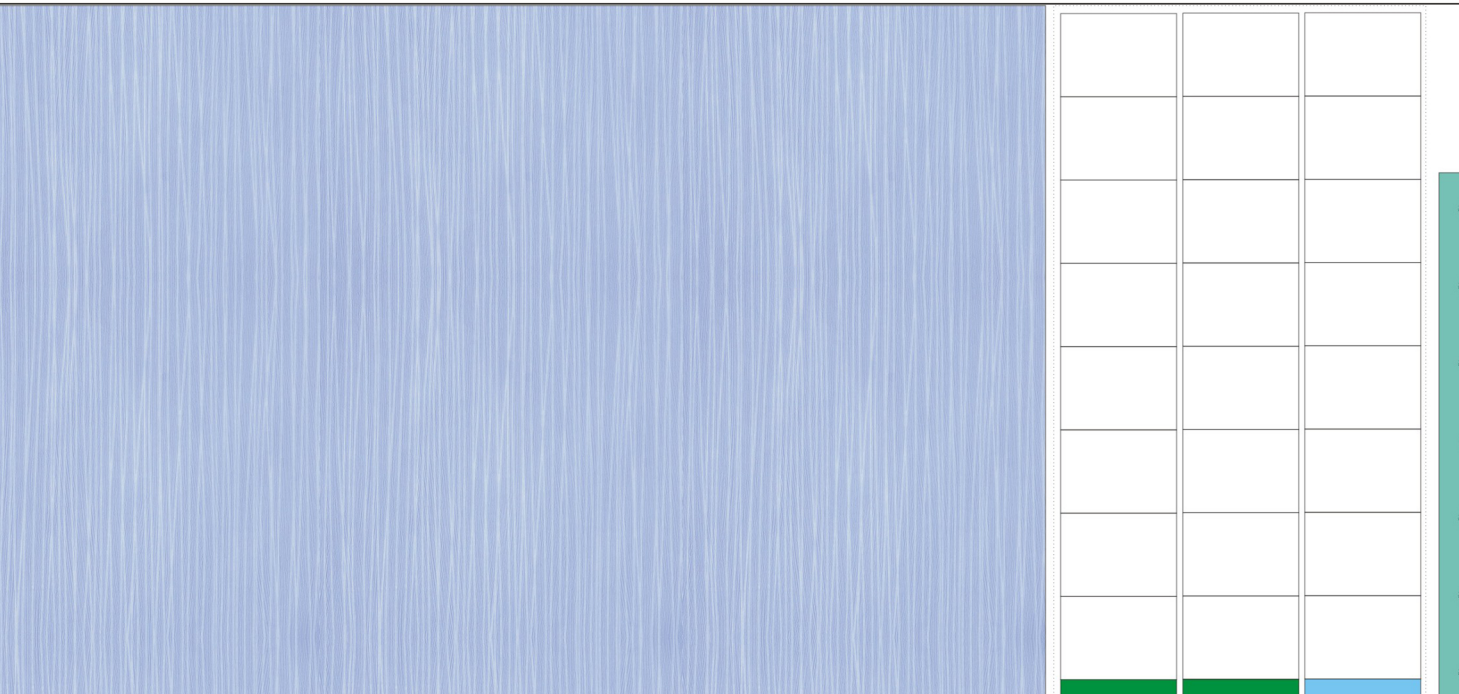
8

Bed



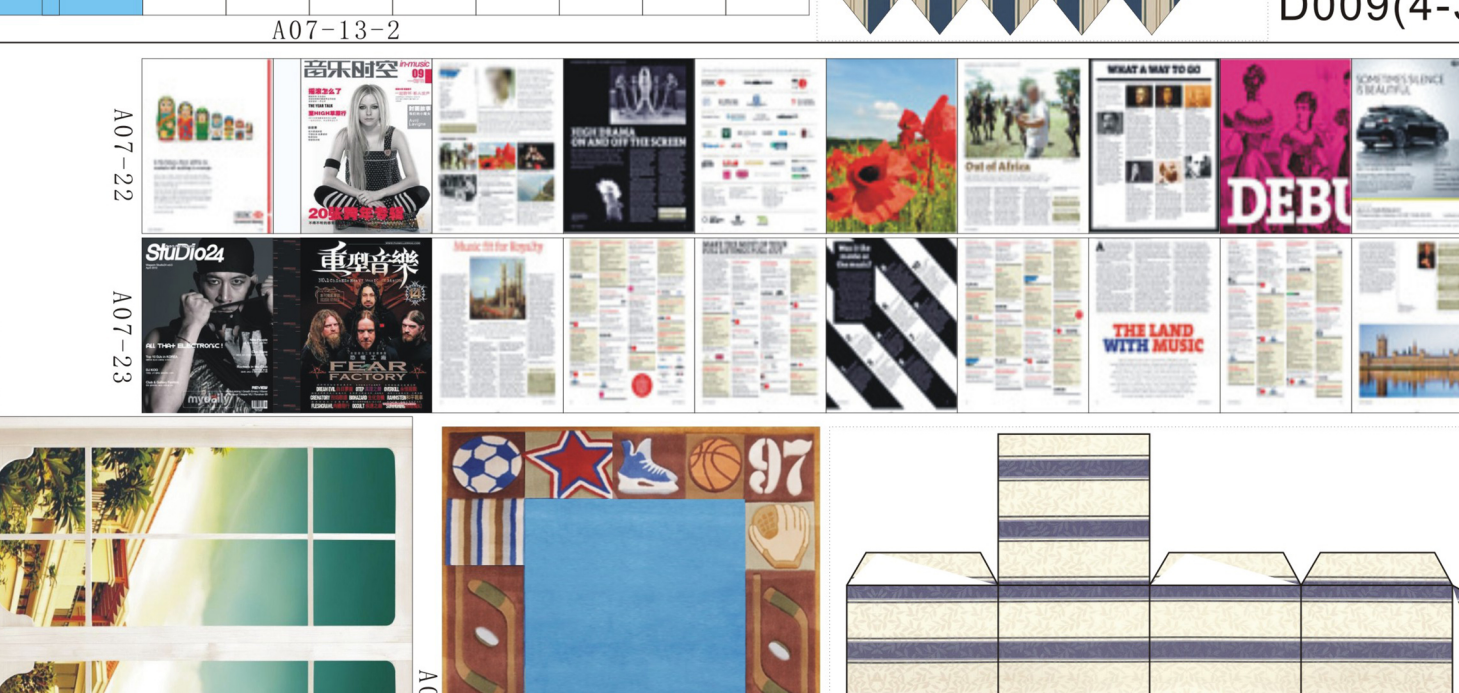
9

Dustproof Cover



10

Battery Box



10

