

## B005 User Manual

### Product Introduction



**Warnings :**

1. Please do not allow infants and young children to play with the package for avoiding dangerous accidents!
2. The product must be taken out by adults and then played by children.
3. Children must be under the custody of adults when playing with the product

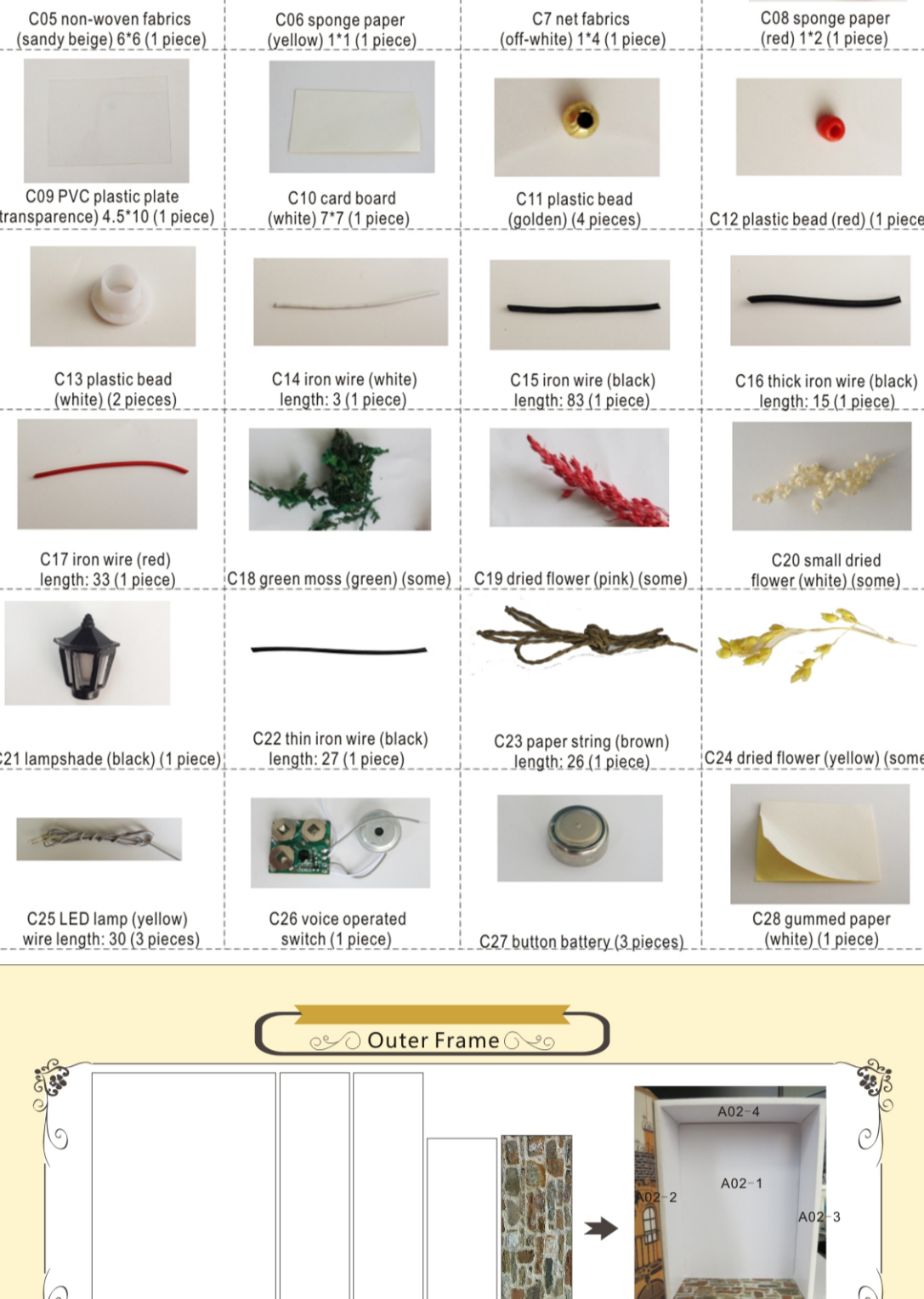
- Notes:**
1. The color picture on package was an effect picture of the product. Please assemble it according to the picture.
  2. Please prepare tools, including knife, ruler, scissor, pencil, eraser, needle, etc.
  3. Sandpaper in the package can be used to polish corners of wooden materials.
  4. Please take out material bags in sequence so as to assemble the product by stages.
  5. During the process of assembling, please refer to the diagrams accordingly.

**Tips for assembling**

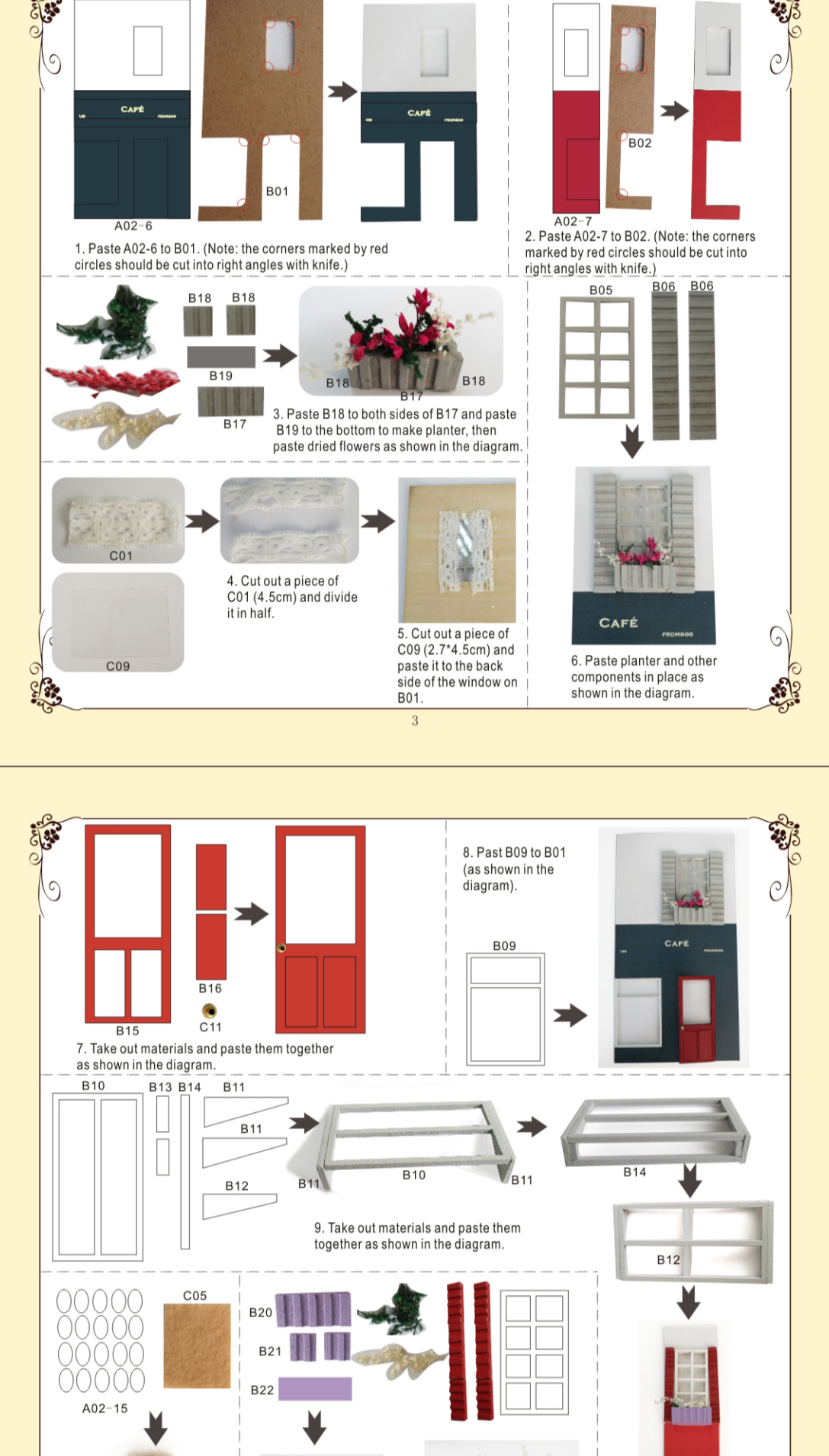
- ① Please read the user manual carefully before assembling.
- ② Firstly polish corners of wooden materials according to Part Number, and then assemble every part tidily according to Part Number.
- ③ Use tweezers to help pasting tiny materials.
- ④ Use pliers to shape iron wire.
- ⑤ Dotted lines on paper accessories are folding line, and grey parts are for pasting.
- ⑥ It is suggested to paste paper accessories by double faced adhesive tape.

### Product Material List

#### Material Bag B



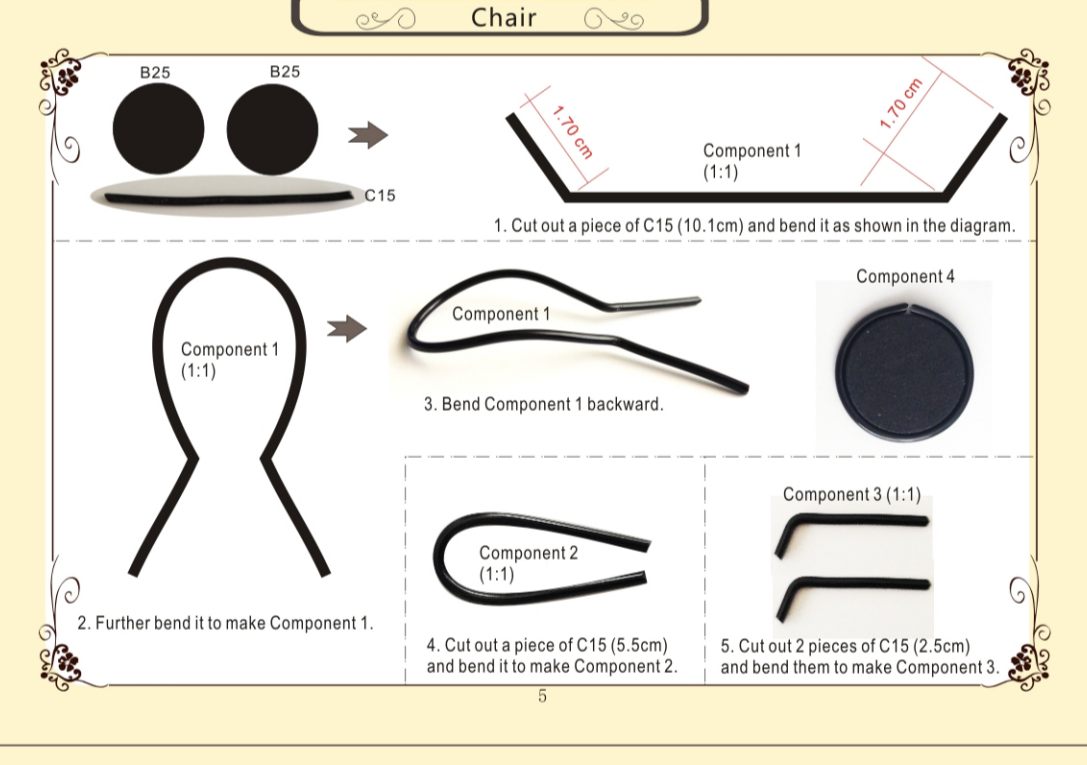
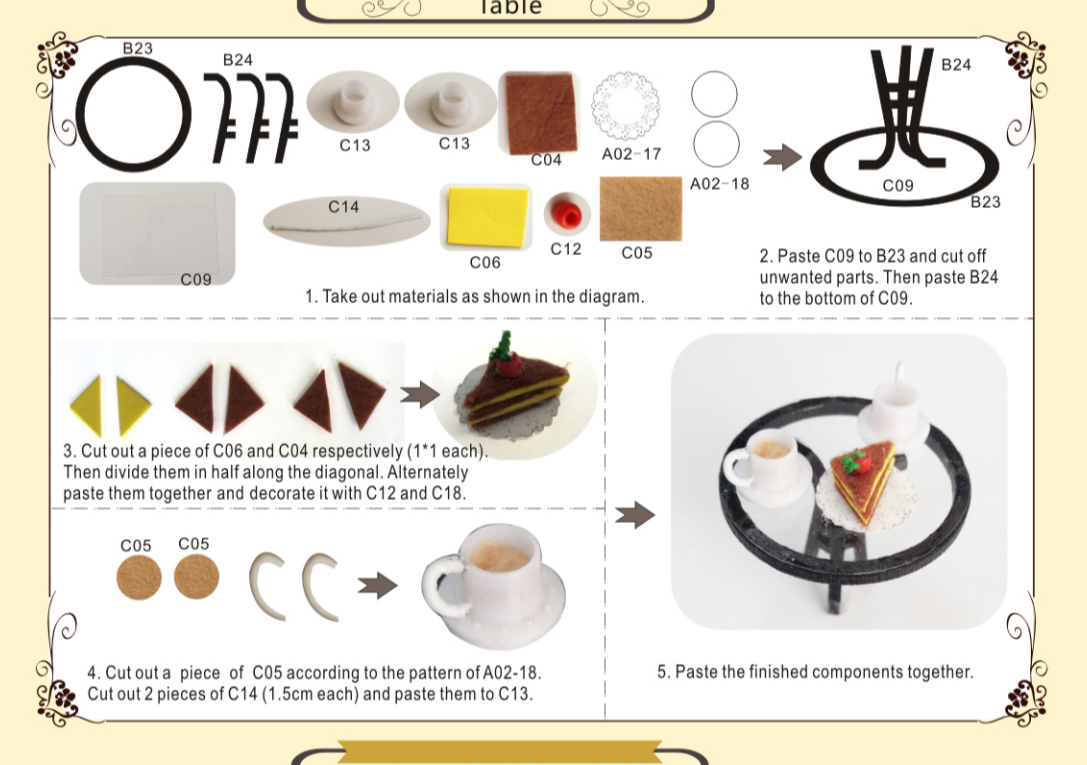
#### Material Bag C



### Outer Frame



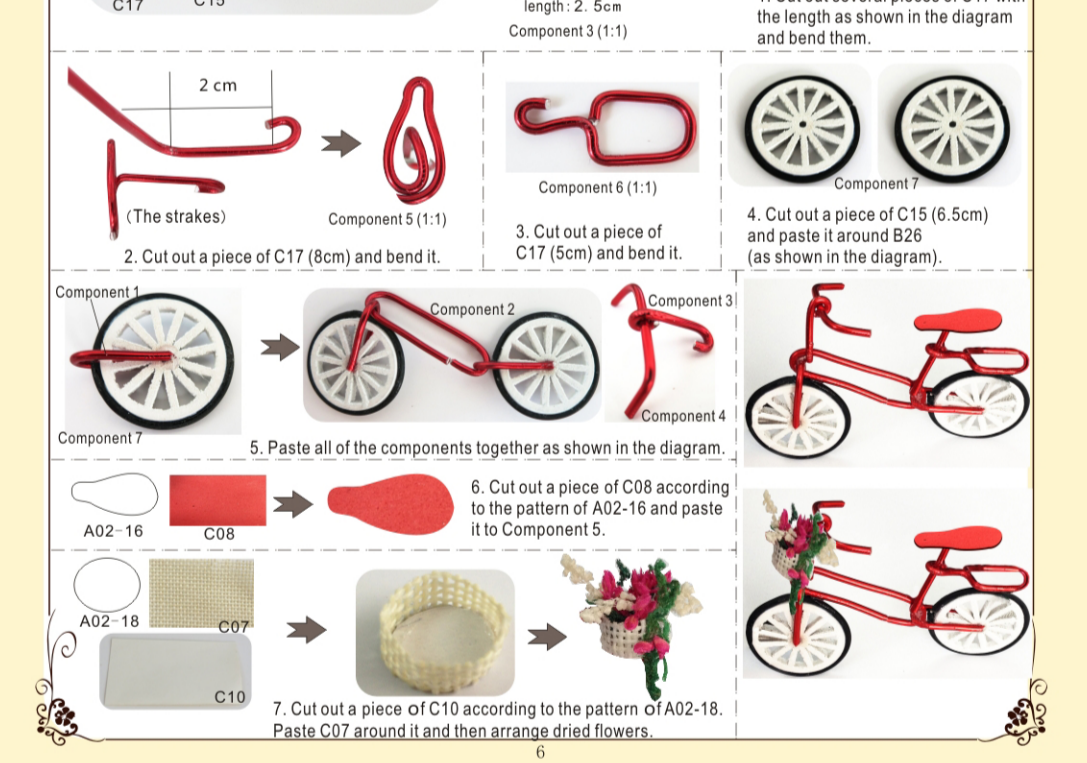
### Outer Wall



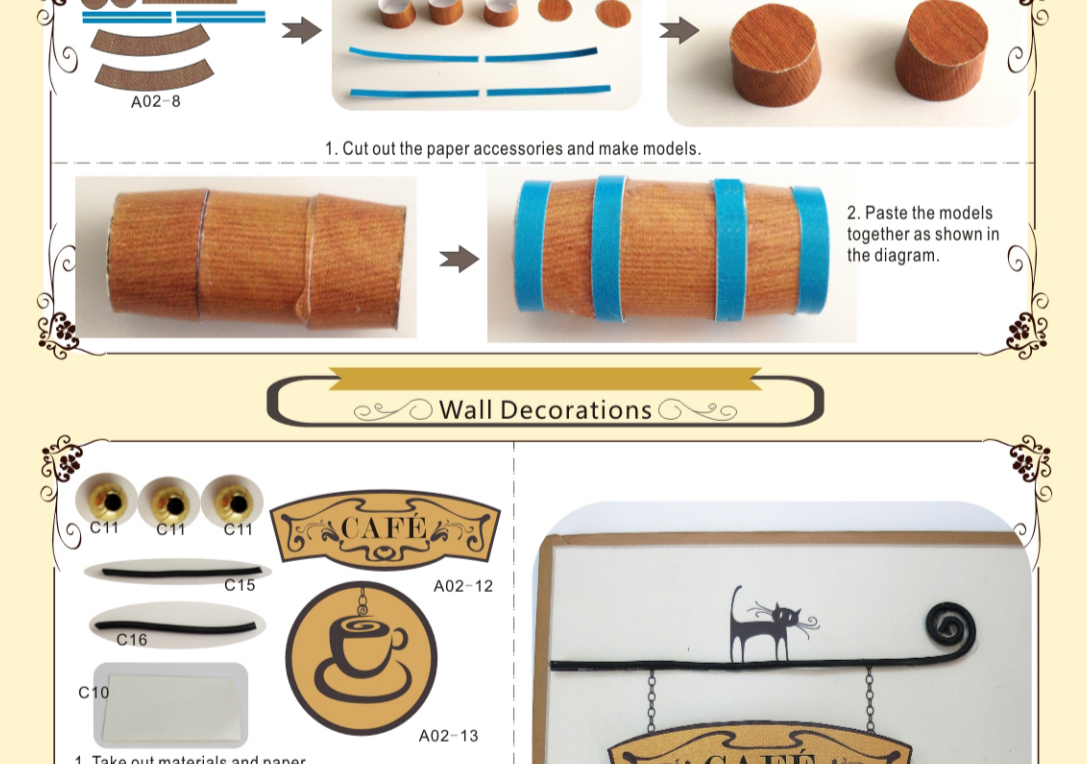
### Poster



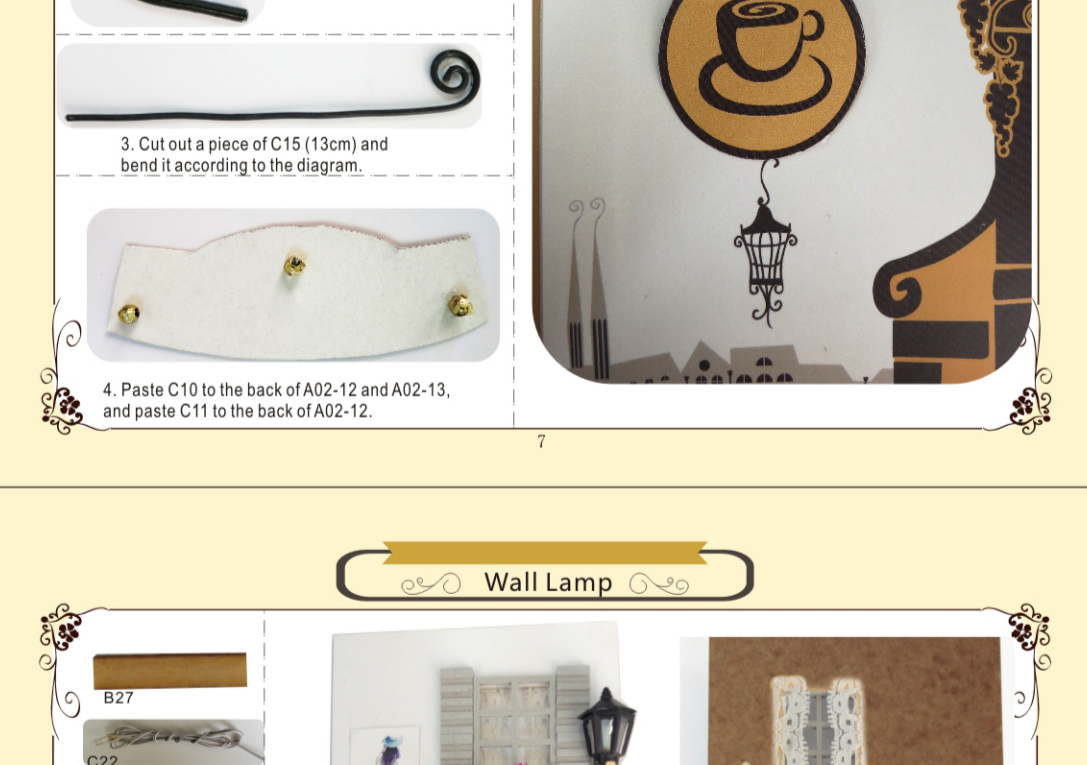
### Table



### Chair



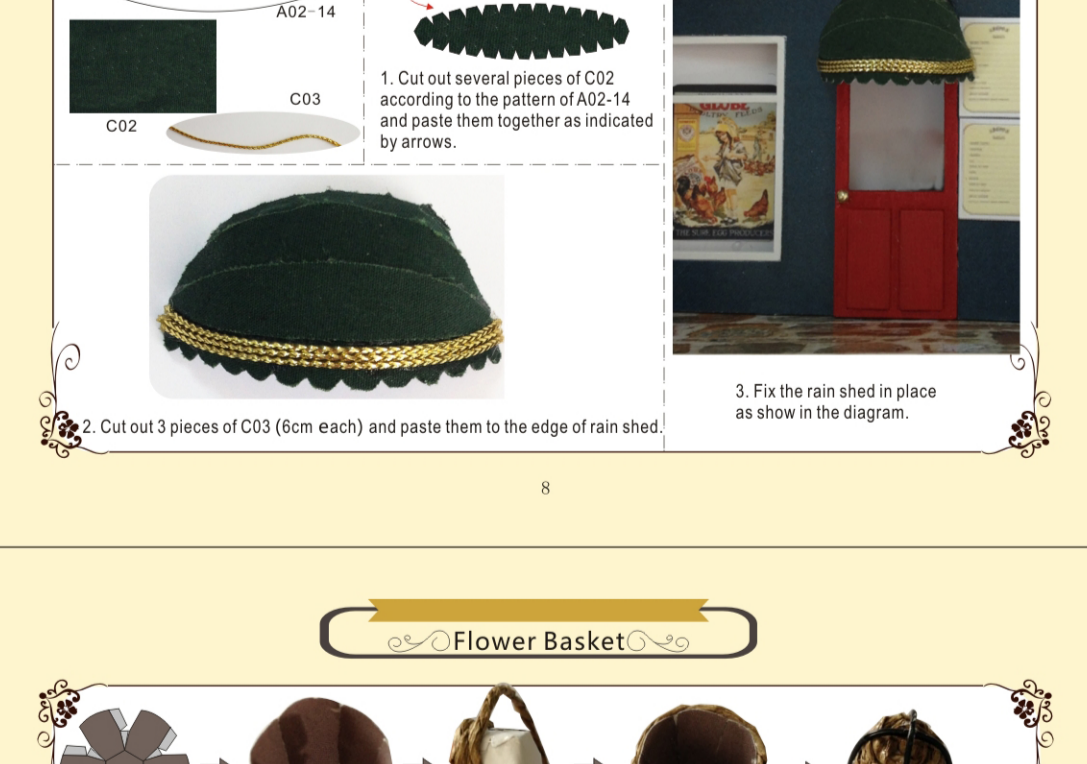
### Bicycle



### Barrel



### Wall Decorations



### Wall Lamp



### Rain Shed



### Flower Basket



### Product Assembling



### Connection of Circuit



### Excellent local figure

